

monster®
Find Better.™

Employment Index

April 2021

Hiring Trends in Malaysia



Contents



01 Key Highlights of the Month

Page 3

02 Hiring Trends - Industry

Page 4

03 Hiring Trends - Functional Area

Page 5

04 Data & Methodology

Page 6

05 About Monster APAC & Gulf

Page 7

06 Annexure

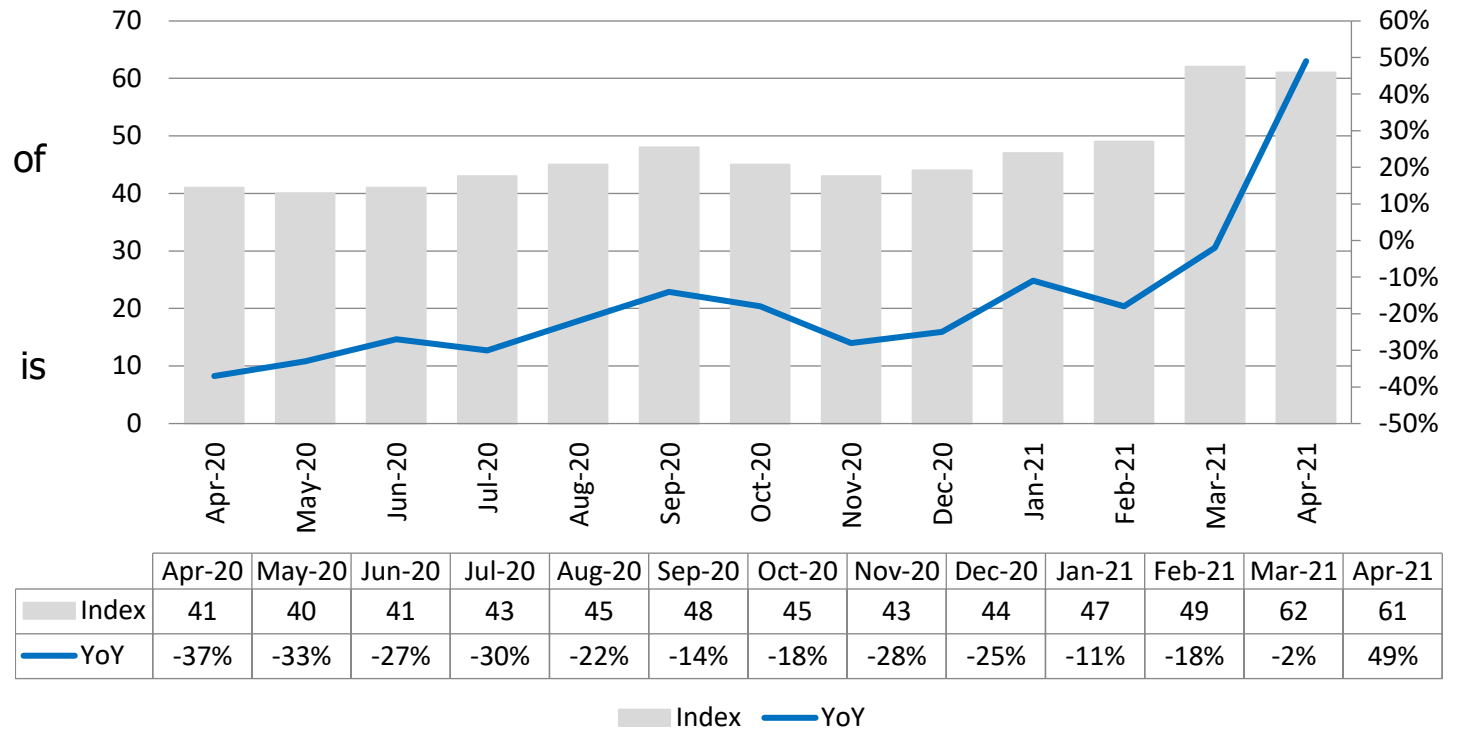
Page 9-10

Key Highlights of the Month

Monster Employment Index Malaysia increased 49% in online recruitment activity between April'20 and April'21

- ✓ The Monster Employment Index (MEI) rise to 61 in April'21 from 41 in April'20.
- ✓ MoM, monthly job demand witnessed a de-growth of 2%; as March'21 saw an index of 62.
- ✓ According to the MEI, the recruitment activity is getting back to Pre-COVID levels.

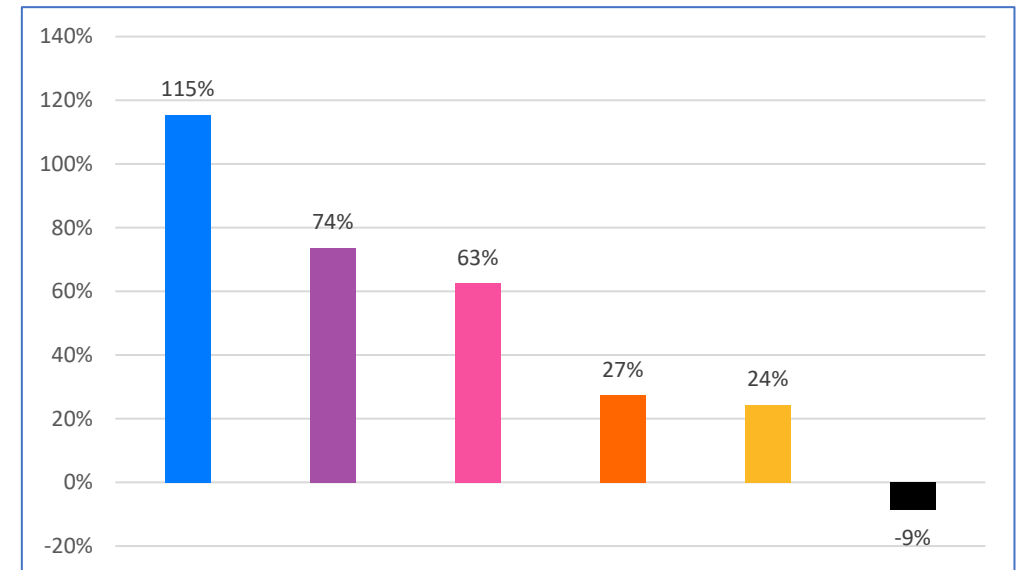
Monster Employment Index



Hiring Trends – Industry*

8 out of 9 industries monitored by the Index recorded huge incline in April'21 on annual basis

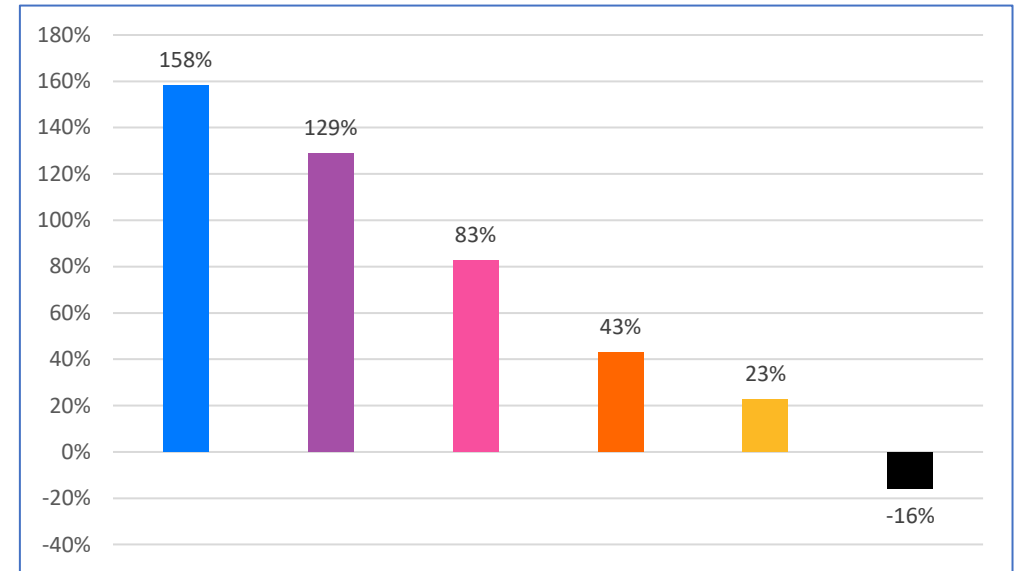
- ✔ **Retail (+115%), IT, Telecom/ISP, BPO/ITES (+74%) and BFSI (+63%)** industries saw the steepest growth in online recruitment activity in April'21 from the year-ago level.
- ✔ All monitored industries except **Hospitality (-9%)**, saw incline in online recruitment activity on YoY basis.
- ✔ Some of the major industries like **Oil and Gas (+27%), Engineering, Construction and Real Estate (+24%), Production/Manufacturing, Automotive and Ancillary (+35%), and Advertising, Market Research, Public Relations, Media and Entertainment (+36%)** also saw year-on-year growth in April'21.



Hiring Trends - Functional Area*

8 out of 9 functional areas monitored by the Index registered increase in annual demand in April'21

- ✓ Annual online demand for all professionals saw a sudden jump in April'21. **Customer Service** (+158%), **Purchase/ Logistics/ Supply chain** (+129%) and **Software, Hardware, Telecom** (+83%) noticed the sharpest incline in recruitment activity from the year ago level.
- ✓ All functional areas except **Hospitality & Travel** (-16%) reflected upsurge in hiring demand.
- ✓ Some of the other areas like **Marketing & Communications** (+23%), **HR & Admin** (+43%), **Finance & Accounts** (+48%), **Engineering/ Production, Real Estate** (+48%), **Sales & Business Development** (+66%) saw incline on YoY basis.



Data & Methodology

The Monster Employment Index is a broad and comprehensive monthly analysis of online job posting activity conducted by Monster India. Based on a real-time review of millions of employer job opportunities culled from a large, representative selection of online career outlets, the Monster Employment Index presents a snapshot of employer online recruitment activity nationwide.

In order to avoid excessive monthly fluctuations, the index is calculated using a volatility-adjusting formula. We publish the data in a volume index format with the base value of 100. The index describes changes in the level of online job demand against the baseline. An increase in the index indicates growth in online job availability and suggests an increase in the demand for employees by employers.

Monster Employment Index was first launched in India in May 2010 with data collected since October 2009 followed by Gulf in April 2011 with data collected since October 2010; Singapore in May 2014 with data collected since January 2011; Philippines and Malaysia in May 2015 with data collected since February 2014.

Monster has taken due care in compiling and processing the data available from various sources for Monster Employment Index, but does not guarantee the accuracy, adequacy or completeness of any information and is not responsible for any errors or omissions or action / decision taken or for the result obtained from the use of such information.



About Monster APAC & Gulf

Monster is a leading online career and recruitment resource, and with its cutting-edge technology, it provides relevant profiles to employers and relevant jobs to jobseekers across industry verticals, experience levels and geographies. Monster started its operations with India in 2001 and today has operations across India, Singapore, Malaysia, Philippines, Hong Kong, Vietnam, Thailand, Indonesia, UAE and Kingdom of Saudi Arabia

In India, it is headquartered in Hyderabad, and has presence in more than 10 other cities of India, including Mumbai, Delhi, Bangalore, Chennai, Pune, Kolkata, Ahmedabad, Baroda, Chandigarh, and Cochin. In India, the Monster Mobile App was voted Product of the Year 2016, under the 'Mobile App Job' category in a survey of over 18,000 people by Nielsen. Monster continues its pioneering work of transforming the recruiting industry with advanced technology using intelligent digital, social and mobile solutions, and a vast array of products and services.

To learn more about Monster in APAC & Gulf, visit:

www.monsterindia.com

www.monster.com.my

www.monstergulf.com

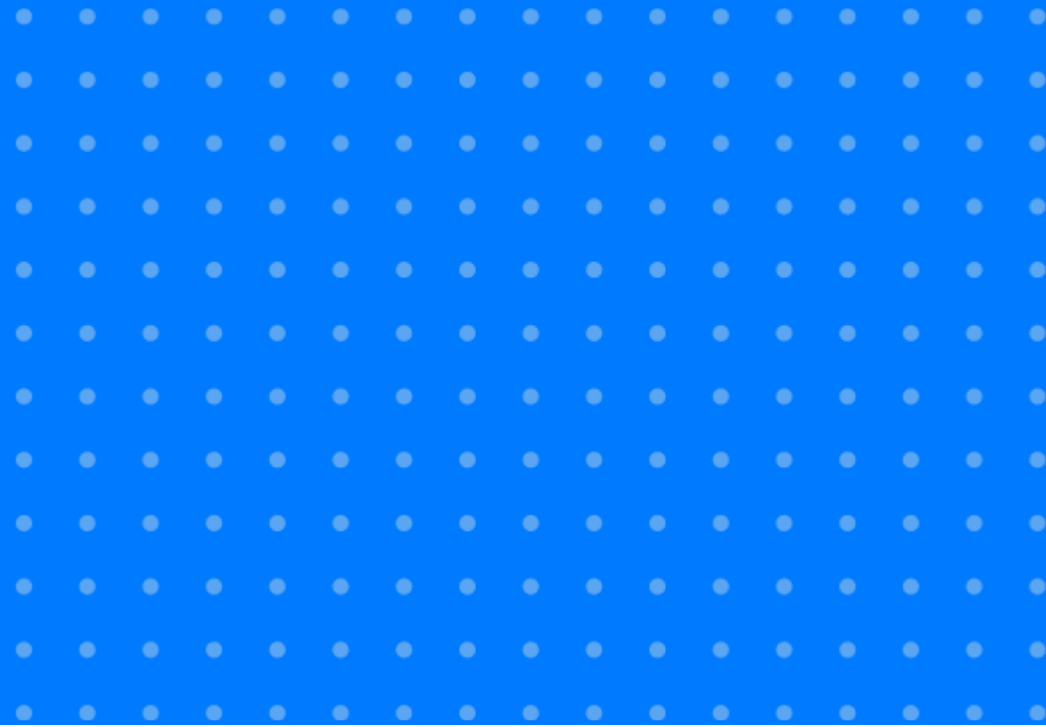
www.monster.com.ph

www.monster.com.sg

www.monster.com.hk



Annexure



Annexure: Industry Data*

Industries	Apr-20	May-20	Jun-20	Jul-20	Aug-20	Sep-20	Oct-20	Nov-20	Dec-20	Jan-21	Feb-21	Mar-21	Apr-21
IT, Telecom/ISP and BPO/ITES	95	64	84	87	90	99	118	116	130	137	163	184	165
Engineering, Construction and Real Estate	41	34	41	44	44	45	47	48	50	51	56	63	51
BFSI	40	38	42	41	43	46	49	48	49	52	59	71	65
Production/Manufacturing, Automotive and Ancillary	78	73	80	80	82	84	89	89	91	94	100	108	105
Oil and Gas	95	86	90	91	90	93	97	101	110	107	125	127	121
Hospitality	46	30	40	40	38	40	38	40	40	40	41	43	42
Retail	13	11	6	10	10	13	16	14	15	16	16	31	28
Logistic, Courier/ Freight/ Transportation, Shipping/ Marine	16	15	24	29	37	42	51	50	53	61	71	94	79
Advertising, Market Research, Public Relations, Media and Entertainment	44	49	46	48	49	52	53	52	54	56	54	64	60

Annexure: Functional Area Data*

Functions	Apr-20	May-20	Jun-20	Jul-20	Aug-20	Sep-20	Oct-20	Nov-20	Dec-20	Jan-21	Feb-21	Mar-21	Apr-21
Software, Hardware, Telecom	63	60	62	60	55	57	64	66	63	77	94	118	115
Finance & Accounts	46	45	48	48	49	51	52	53	52	56	58	69	68
Sales & Business Development	53	46	46	51	54	59	64	66	68	70	75	91	88
Customer Service	12	9	6	7	7	11	15	17	19	23	26	31	31
Marketing & Communications	66	66	67	69	69	71	71	72	71	74	74	80	81
HR & Admin	42	42	43	45	45	46	47	48	48	51	50	61	60
Engineering /Production, Real Estate	48	46	49	51	52	54	57	57	57	61	62	73	71
Hospitality & Travel	19	12	6	2	2	4	5	5	6	6	8	12	16
Purchase/ Logistics/ Supply Chain	38	37	43	46	50	52	57	58	59	66	68	88	87

Thank you

