

monster®
Find Better.™

Employment Index

August 2021

Hiring Trends in Malaysia



Contents



01 Key Highlights of the Month

Page 3

02 Hiring Trends - Industry

Page 4

03 Hiring Trends - Functional Area

Page 5

04 Data & Methodology

Page 6

05 About Monster APAC & Gulf

Page 7

06 Annexure

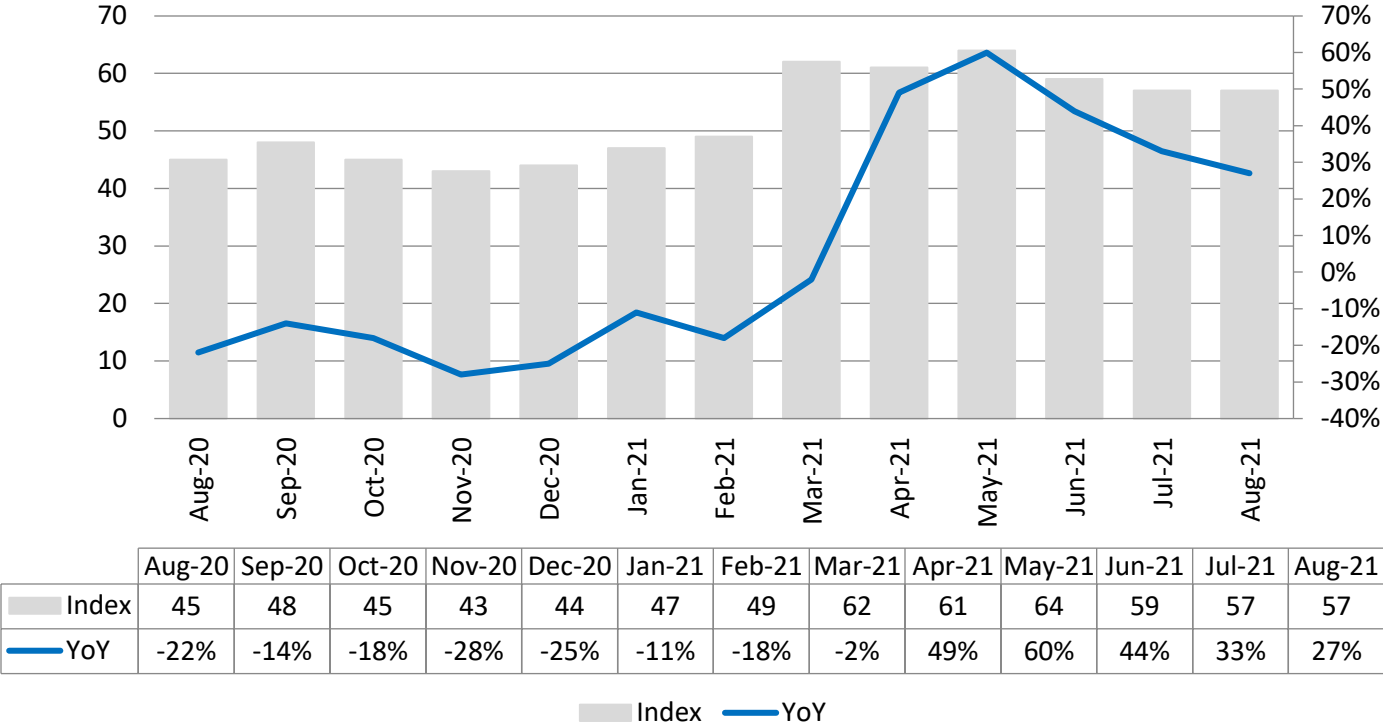
Page 9-10

Key Highlights of the Month

Monster Employment Index Malaysia increased 27% in online recruitment activity between August'20 and August'21

- ✓ The Monster Employment Index (MEI) moved to 57 in August'21 from 45 in August'20.
- ✓ MoM, monthly job demand remained flat; as July'21 too saw an index of 57.
- ✓ According to the MEI, the recruitment activity is stabilized and remained neutral on MoM basis.

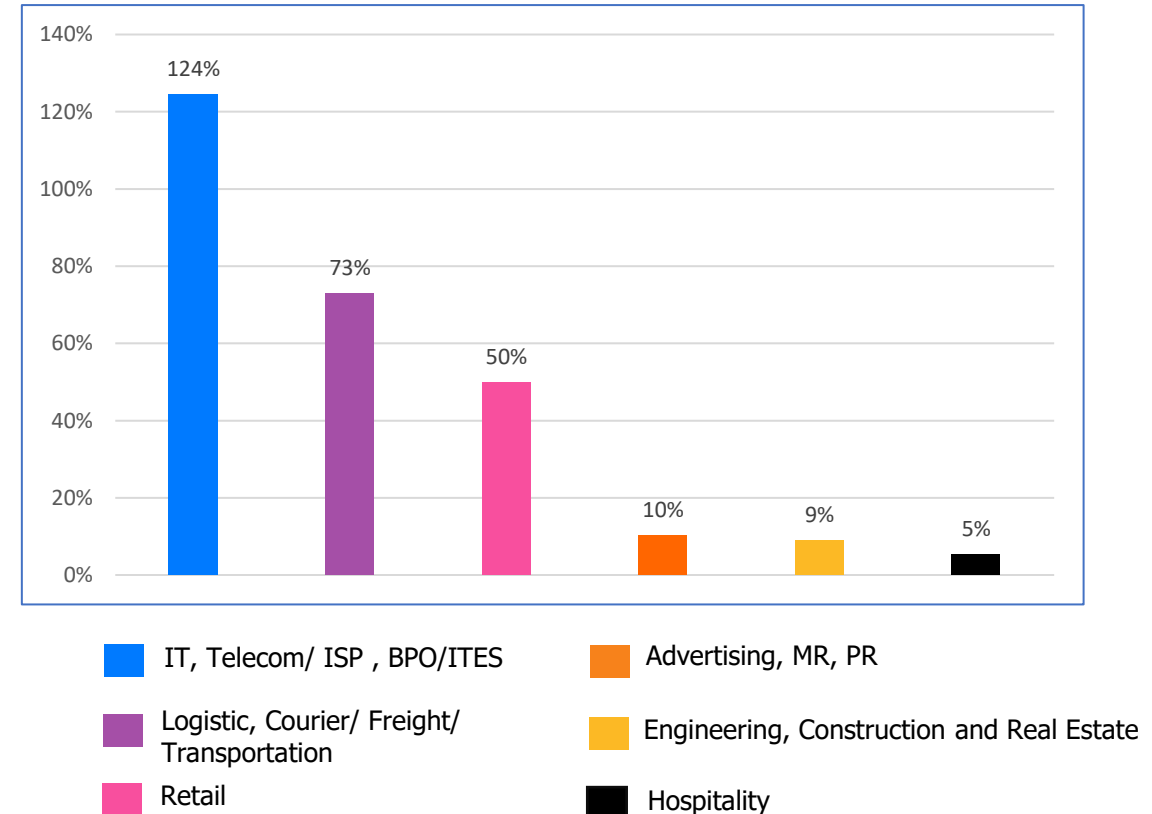
Monster Employment Index



Hiring Trends – Industry*

In August'21, all 9 industries monitored by the Index witnessed incline in e-recruitment activity annually

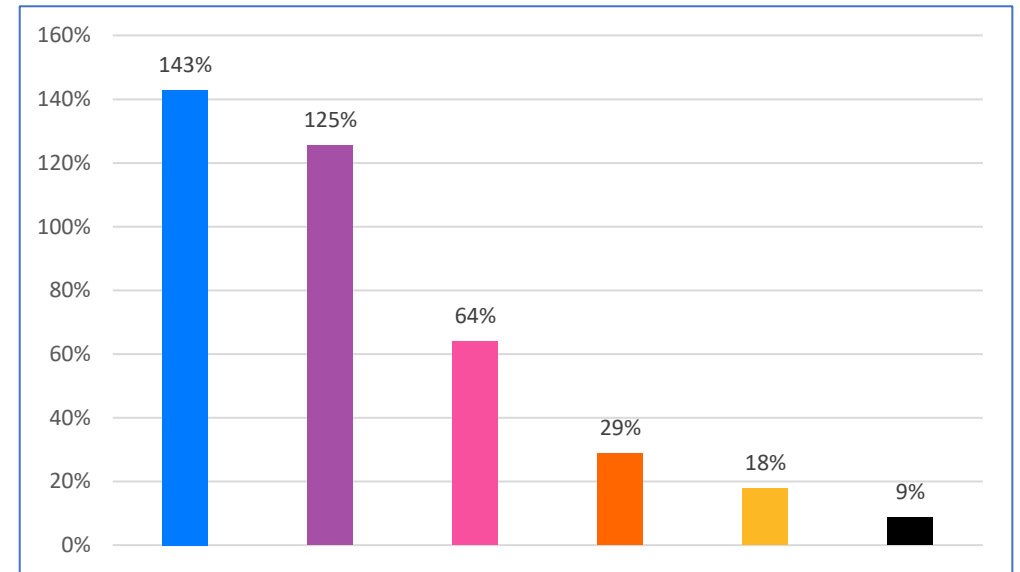
- ✓ **IT, Telecom/ISP, BPO/ITES** (+124%), **Logistic, Courier/ Freight/ Transportation, Shipping/ Marine** (+73%) and **Retail** (+50%), industries saw the steepest incline in online recruitment activity in August'21 from the year-ago level.
- ✓ **Hospitality** (+5%) has finally achieved the single digit growth. Followed by **Engineering, Construction and Real Estate** (+9%) and **Advertising, Market Research, Public Relations, Media and Entertainment** (+10%) noticing the lowest growth among others annually in August'21.
- ✓ Some of the major industries like **BFSI** (+47%), **Oil and Gas** (+28%), **Production/Manufacturing, Automotive and Ancillary** (+20%), also grew sequentially in August'21 Vs August'20



Hiring Trends - Functional Area*

All 9 functional areas monitored by the Index registered sequential growth in annual demand in August'21

- ✓ Annual online demand for all professionals witnessed upsurge in August'21. **Customer Service** (+143%), **Software, Hardware, Telecom** (+125%) and **Purchase/ Logistics/ Supply chain** (+64%) noticed the sharpest incline in recruitment activity from the year ago level.
- ✓ Some of the other areas like **Marketing & Communications** (+9%), **HR & Admin** (+18%), **Engineering/ Production, Real Estate** (+29%), **Finance & Accounts** (+41%) and **Sales & Business Development** (+41%) also grew sequentially on YoY basis.



Data & Methodology

The Monster Employment Index is a broad and comprehensive monthly analysis of online job posting activity conducted by Monster India. Based on a real-time review of millions of employer job opportunities culled from a large, representative selection of online career outlets, the Monster Employment Index presents a snapshot of employer online recruitment activity nationwide.

In order to avoid excessive monthly fluctuations, the index is calculated using a volatility-adjusting formula. We publish the data in a volume index format with the base value of 100. The index describes changes in the level of online job demand against the baseline. An increase in the index indicates growth in online job availability and suggests an increase in the demand for employees by employers.

Monster Employment Index was first launched in India in August 2010 with data collected since October 2009 followed by Gulf in August 2011 with data collected since October 2010; Singapore in August 2014 with data collected since January 2011; Philippines and Malaysia in August 2015 with data collected since February 2014.

Monster has taken due care in compiling and processing the data available from various sources for Monster Employment Index, but does not guarantee the accuracy, adequacy or completeness of any information and is not responsible for any errors or omissions or action / decision taken or for the result obtained from the use of such information.



About Monster APAC & Gulf

Monster is a leading online career and recruitment resource, and with its cutting-edge technology, it provides relevant profiles to employers and relevant jobs to jobseekers across industry verticals, experience levels and geographies. Monster started its operations with India in 2001 and today has operations across India, Singapore, Malaysia, Philippines, Hong Kong, Vietnam, Thailand, Indonesia, UAE and Kingdom of Saudi Arabia

In India, it is headquartered in Hyderabad, and has presence in more than 10 other cities of India, including Mumbai, Delhi, Bangalore, Chennai, Pune, Kolkata, Ahmedabad, Baroda, Chandigarh, and Cochin. In India, the Monster Mobile App was voted Product of the Year 2016, under the 'Mobile App Job' category in a survey of over 18,000 people by Nielsen. Monster continues its pioneering work of transforming the recruiting industry with advanced technology using intelligent digital, social and mobile solutions, and a vast array of products and services.

To learn more about Monster in APAC & Gulf, visit:

www.monsterindia.com

www.monster.com.my

www.monstergulf.com

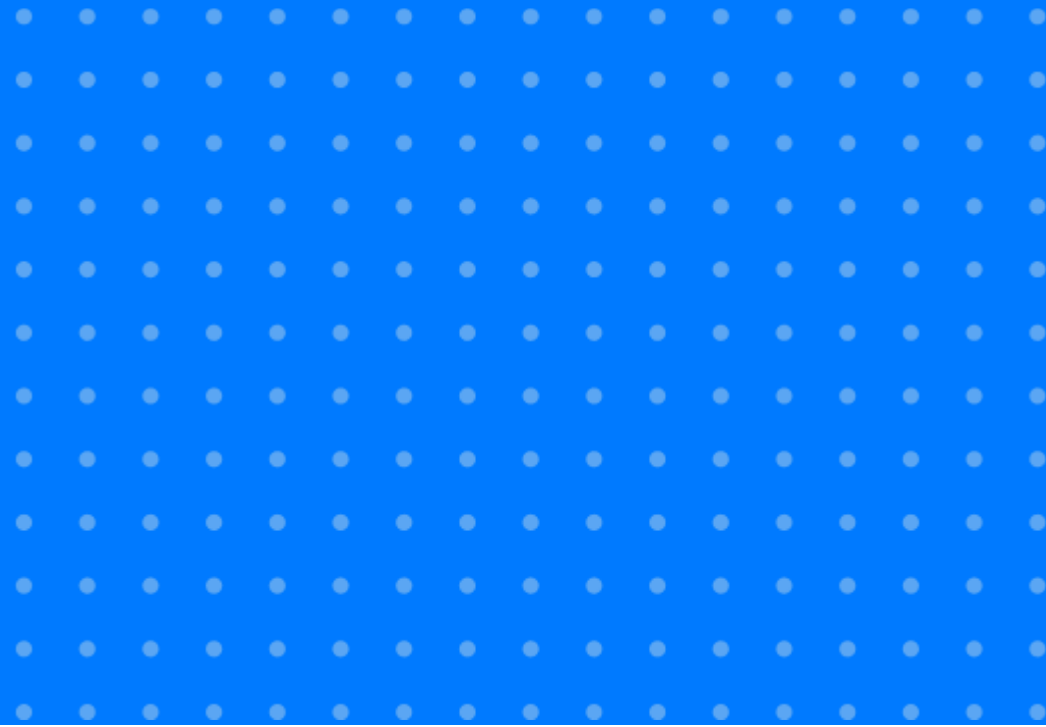
www.monster.com.ph

www.monster.com.sg

www.monster.com.hk



Annexure



Annexure: Industry Data*

Industries	Aug-20	Sep-20	Oct-20	Nov-20	Dec-20	Jan-21	Feb-21	Mar-21	Apr-21	May-21	Jun-21	Jul-21	Aug-21
IT, Telecom/ISP and BPO/ITES	90	99	118	116	130	137	163	184	165	187	194	194	202
Engineering, Construction and Real Estate	44	45	47	48	50	51	56	63	51	50	48	48	48
BFSI	43	46	49	48	49	52	59	71	65	64	65	62	63
Production/Manufacturing, Automotive and Ancillary	82	84	89	89	91	94	100	108	105	106	101	97	98
Oil and Gas	90	93	97	101	110	107	125	127	121	123	128	133	115
Hospitality	38	40	38	40	40	40	41	43	42	41	40	39	40
Retail	10	13	16	14	15	16	16	31	28	24	14	15	15
Logistic, Courier/ Freight/ Transportation, Shipping/ Marine	37	42	51	50	53	61	71	94	79	74	63	55	64
Advertising, Market Research, Public Relations, Media and Entertainment	49	52	53	52	54	56	54	64	60	60	57	57	54

Annexure: Functional Area Data*

Functions	Aug-20	Sep-20	Oct-20	Nov-20	Dec-20	Jan-21	Feb-21	Mar-21	Apr-21	May-21	Jun-21	Jul-21	Aug-21
Software, Hardware, Telecom	55	57	64	66	63	77	94	118	115	114	120	119	124
Finance & Accounts	49	51	52	53	52	56	58	69	68	68	67	68	69
Sales & Business Development	54	59	64	66	68	70	75	91	88	88	76	80	76
Customer Service	7	11	15	17	19	23	26	31	31	24	24	26	17
Marketing & Communications	69	71	71	72	71	74	74	80	81	80	76	75	75
HR & Admin	45	46	47	48	48	51	50	61	60	61	55	54	53
Engineering /Production, Real Estate	52	54	57	57	57	61	62	73	71	72	67	65	67
Hospitality & Travel	2	4	5	5	6	6	8	12	16	16	13	11	8
Purchase/ Logistics/ Supply Chain	50	52	57	58	59	66	68	88	87	88	81	75	82

Thank you

