

monster®
Find Better.™

Employment Index

Feb 2022

Hiring Trends in Malaysia



Contents



01 Key Highlights of the Month

Page 3

02 Hiring Trends - Industry

Page 4

03 Hiring Trends - Functional Area

Page 5

04 Data & Methodology

Page 6

05 About Monster APAC & Gulf

Page 7

06 Annexure

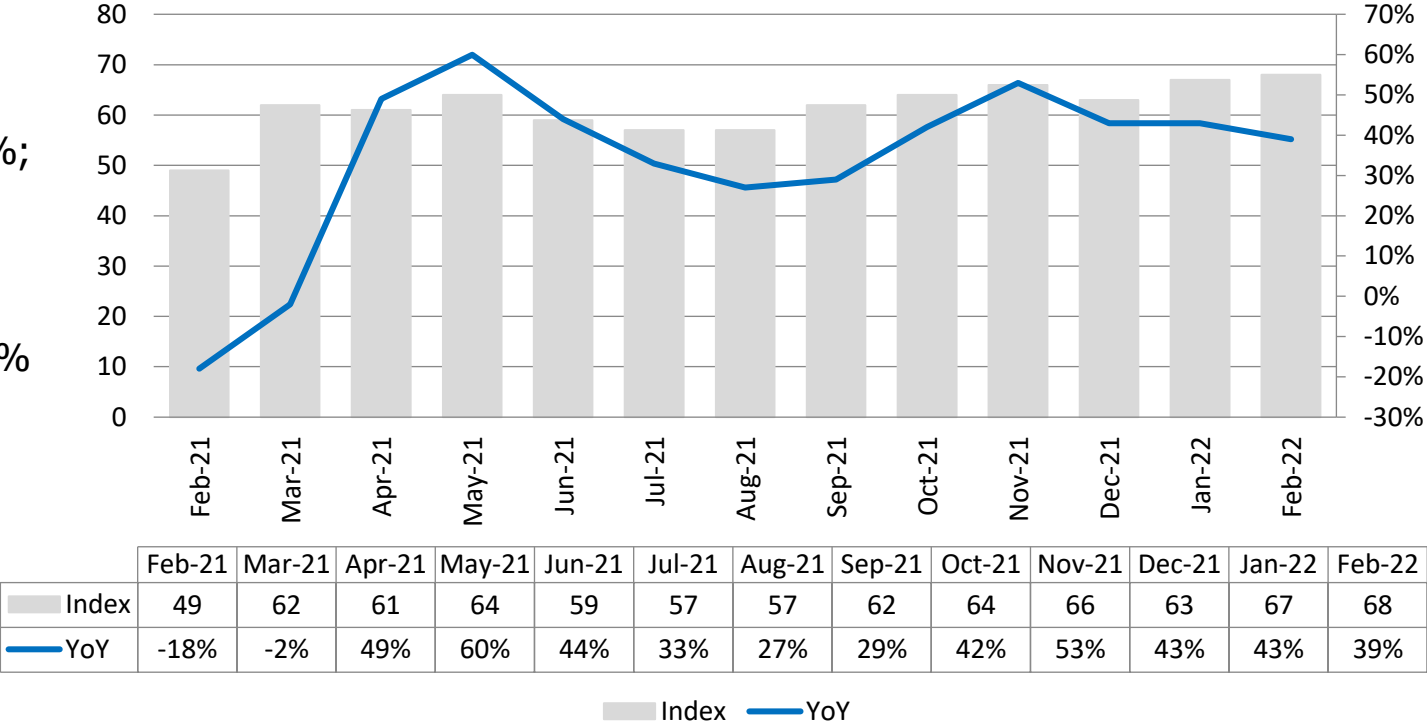
Page 9-10

Key Highlights of the Month

Monster Employment Index Malaysia saw 39% growth in online recruitment activity between February'21 and February'22

- ✓ The Monster Employment Index (MEI) moved to 68 in February'22 from 49 in February'21.
- ✓ MoM, the job demand witnessed an increase of 1%; as January'22 saw an index of 67.
- ✓ According to the MEI, hiring activity noticed 10% growth in the last six month.

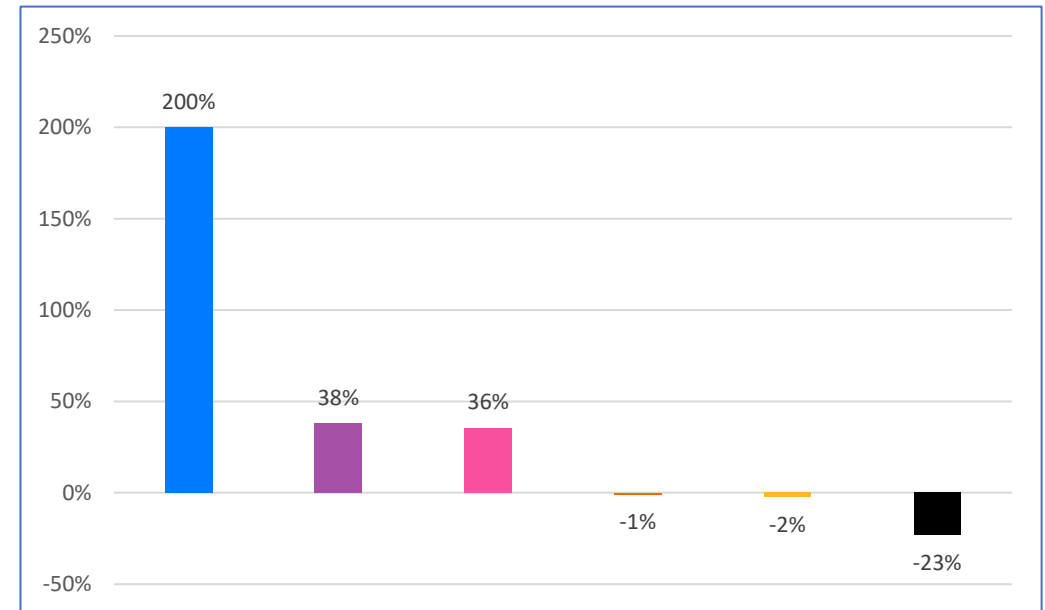
Monster Employment Index



Hiring Trends – Industry*

6 out of 9 industries monitored by the Index witnessed rise in job demand in February'22 annually.

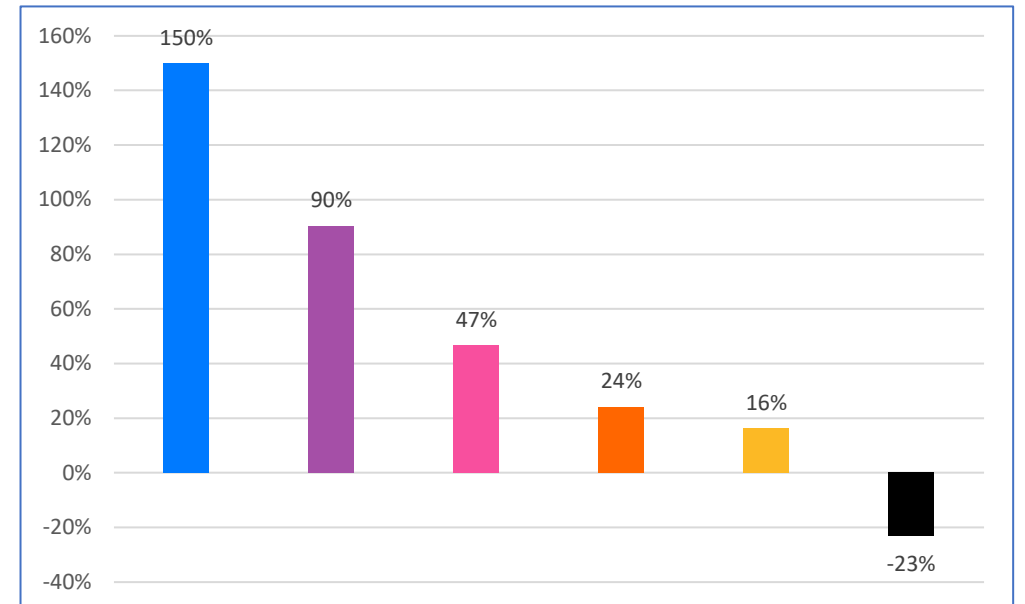
- ✓ **Retail** (+200%), **IT, Telecom/ISP, BPO/ITES** (+38%) and **BFSI** (+36%) industries marked the sharpest rise in demand for jobs in February'22 from the year-ago level.
- ✓ **Oil and Gas** (-23%) noticed major dip in hiring activity followed by **Engineering, Construction and Real Estate** (-2%) and **Production/Manufacturing, Automotive and Ancillary** (-1%) annually in February'22.
- ✓ Some of the major industries like **Logistic, Courier/ Freight/ Transportation, Shipping/ Marine** (+3%), **Advertising, Market Research, Public Relations, Media and Entertainment** (+15%) and **Hospitality** (+22%) also saw consecutive growth in February'21 Vs February'22.



Hiring Trends - Functional Area*

8 out of 9 functional areas monitored by the Index registered increased annual demand in February'22

- ✓ The demand for professionals increased in almost all functions, monthly as well as annually in February'22. **Hospitality & Travel (+150%)**, **Software, Hardware, Telecom (+90%)** and **Finance & Accounts (+47%)** witnessed the sharpest increase in recruitment activity from the year ago level.
- ✓ Some of the other areas like **Sales & Business Development (+29%)**, **Purchase/ Logistics/ Supply chain (+35%)**, **Engineering/ Production, Real Estate (+30%)**, **HR & Admin (+24%)**, **Marketing & Communications (+16%)** grew sequentially on YoY basis whereas **Customer Service (-23%)** saw decline in hiring activity annually for the month of February'22.



Data & Methodology

The Monster Employment Index is a broad and comprehensive monthly analysis of online job posting activity conducted by Monster India. Based on a real-time review of millions of employer job opportunities culled from a large, representative selection of online career outlets, the Monster Employment Index presents a snapshot of employer online recruitment activity nationwide.

In order to avoid excessive monthly fluctuations, the index is calculated using a volatility-adjusting formula. We publish the data in a volume index format with the base value of 100. The index describes changes in the level of online job demand against the baseline. An increase in the index indicates growth in online job availability and suggests an increase in the demand for employees by employers.

Monster Employment Index was first launched in India in January 2010 with data collected since January 2009 followed by Gulf in January 2011 with data collected since January 2010; Singapore in January 2014 with data collected since January 2011; Philippines and Malaysia in January 2015 with data collected since February 2014.

Monster has taken due care in compiling and processing the data available from various sources for Monster Employment Index, but does not guarantee the accuracy, adequacy or completeness of any information and is not responsible for any errors or omissions or action / decision taken or for the result obtained from the use of such information.



About Monster APAC & Gulf

Monster is a leading online career and recruitment resource, and with its cutting-edge technology, it provides relevant profiles to employers and relevant jobs to jobseekers across industry verticals, experience levels and geographies. Monster started its operations with India in 2001 and today has operations across India, Singapore, Malaysia, Philippines, Hong Kong, Vietnam, Thailand, Indonesia, UAE and Kingdom of Saudi Arabia

In India, it is headquartered in Hyderabad, and has presence in more than 10 other cities of India, including Mumbai, Delhi, Bangalore, Chennai, Pune, Kolkata, Ahmedabad, Baroda, Chandigarh, and Cochin. In India, the Monster Mobile App was voted Product of the Year 2016, under the 'Mobile App Job' category in a survey of over 18,000 people by Nielsen. Monster continues its pioneering work of transforming the recruiting industry with advanced technology using intelligent digital, social and mobile solutions, and a vast array of products and services.

To learn more about Monster in APAC & Gulf, visit:

www.monsterindia.com

www.monster.com.my

www.monstergulf.com

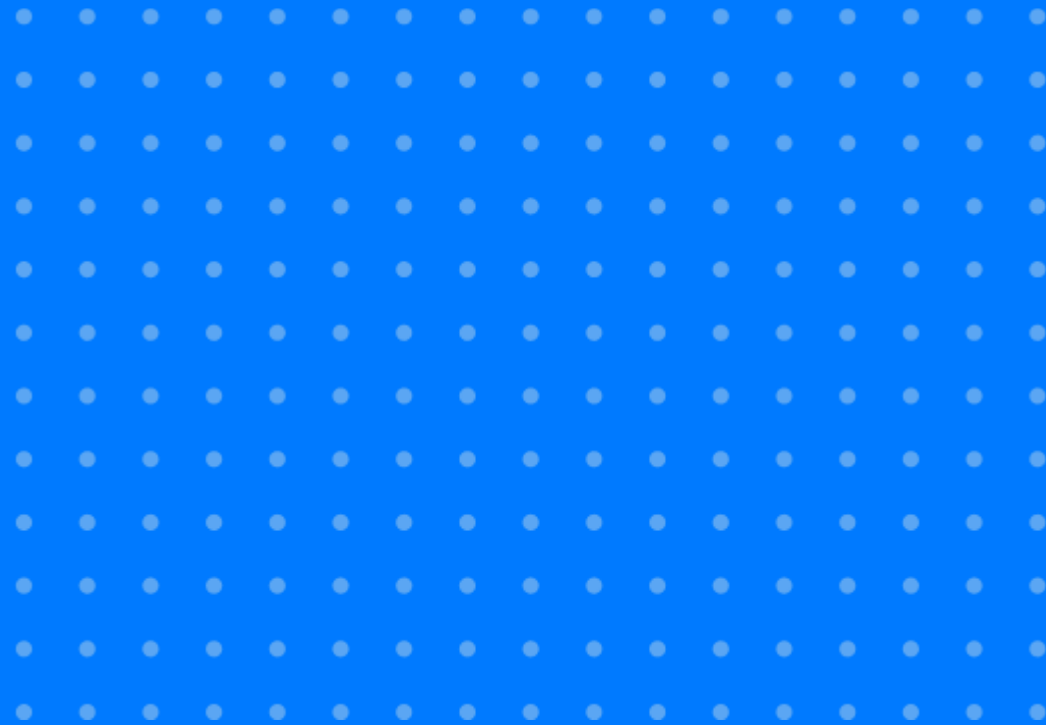
www.monster.com.ph

www.monster.com.sg

www.monster.com.hk



Annexure



Annexure: Industry Data*

Industries	Feb-21	Mar-21	Apr-21	May-21	Jun-21	Jul-21	Aug-21	Sep-21	Oct-21	Nov-21	Dec-21	Jan-22	Feb-22
IT, Telecom/ISP and BPO/ITES	163	184	165	187	194	194	202	207	212	225	208	215	225
Engineering, Construction and Real Estate	56	63	51	50	48	48	48	50	55	55	53	55	54
BFSI	59	71	65	64	65	62	63	68	75	77	71	77	80
Production/Manufacturing, Automotive and Ancillary	100	108	105	106	101	97	98	100	107	106	102	105	99
Oil and Gas	125	127	121	123	128	133	115	113	104	100	95	97	96
Hospitality	41	43	42	41	40	39	40	40	44	48	47	49	50
Retail	16	31	28	24	14	15	15	30	43	54	46	52	48
Logistic, Courier/ Freight/ Transportation, Shipping/ Marine	71	94	79	74	63	55	64	68	88	88	71	80	73
Advertising, Market Research, Public Relations, Media and Entertainment	54	64	60	60	57	57	54	57	61	64	59	60	62

Annexure: Functional Area Data*

Functions	Feb-21	Mar-21	Apr-21	May-21	Jun-21	Jul-21	Aug-21	Sep-21	Oct-21	Nov-21	Dec-21	Jan-22	Feb-22
Software, Hardware, Telecom	94	118	115	114	120	119	124	139	147	155	165	175	179
Finance & Accounts	58	69	68	68	67	68	69	73	77	77	79	82	85
Sales & Business Development	75	91	88	88	76	80	76	87	90	102	95	100	97
Customer Service	26	31	31	24	24	26	17	17	22	27	22	23	20
Marketing & Communications	74	80	81	80	76	75	75	78	83	85	82	84	86
HR & Admin	50	61	60	61	55	54	53	56	60	63	62	64	65
Engineering /Production, Real Estate	62	73	71	72	67	65	67	71	76	78	76	79	77
Hospitality & Travel	8	12	16	16	13	11	8	12	12	15	17	17	20
Purchase/ Logistics/ Supply Chain	68	88	87	88	81	75	82	85	92	97	87	94	92

Thank you

