

monster®  
Find Better.™

# Employment Index

June 2021

## Hiring Trends in Malaysia



# Contents



01 Key Highlights of the Month

Page 3

02 Hiring Trends - Industry

Page 4

03 Hiring Trends - Functional Area

Page 5

04 Data & Methodology

Page 6

05 About Monster APAC & Gulf

Page 7

06 Annexure

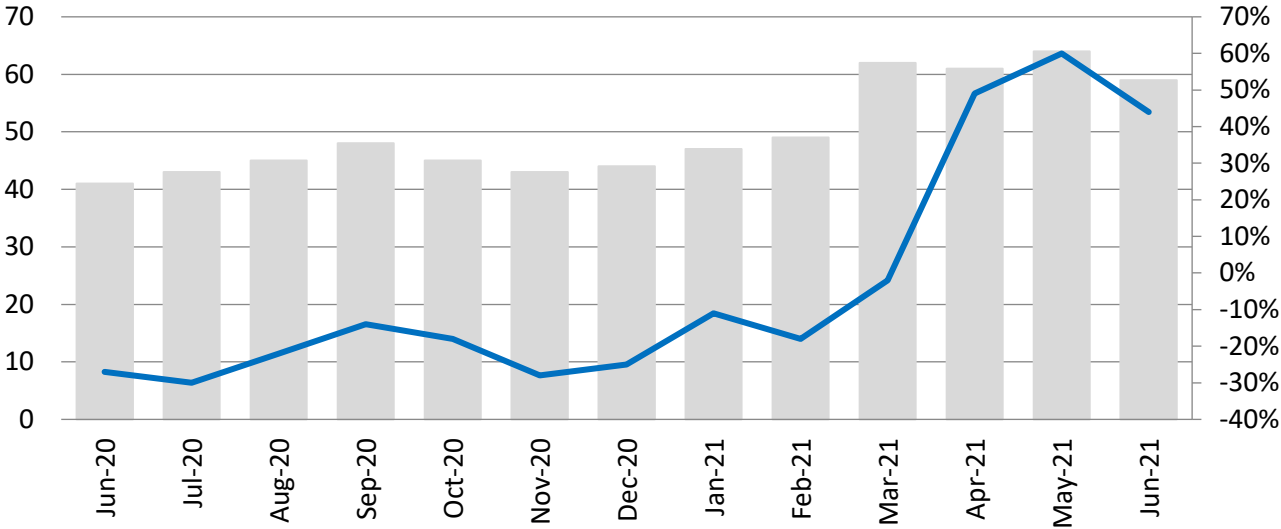
Page 9-10

# Key Highlights of the Month

**Monster Employment Index Malaysia increased 44% in online recruitment activity between June'20 and June'21**

- ✓ The Monster Employment Index (MEI) moved to 59 in June'21 from 41 in June'20.
- ✓ MoM, monthly job demand witnessed a drop of 8%; as May'21 saw an index of 64.
- ✓ According to the MEI, the recruitment activity is impacted and declined on MoM basis.

**Monster Employment Index**



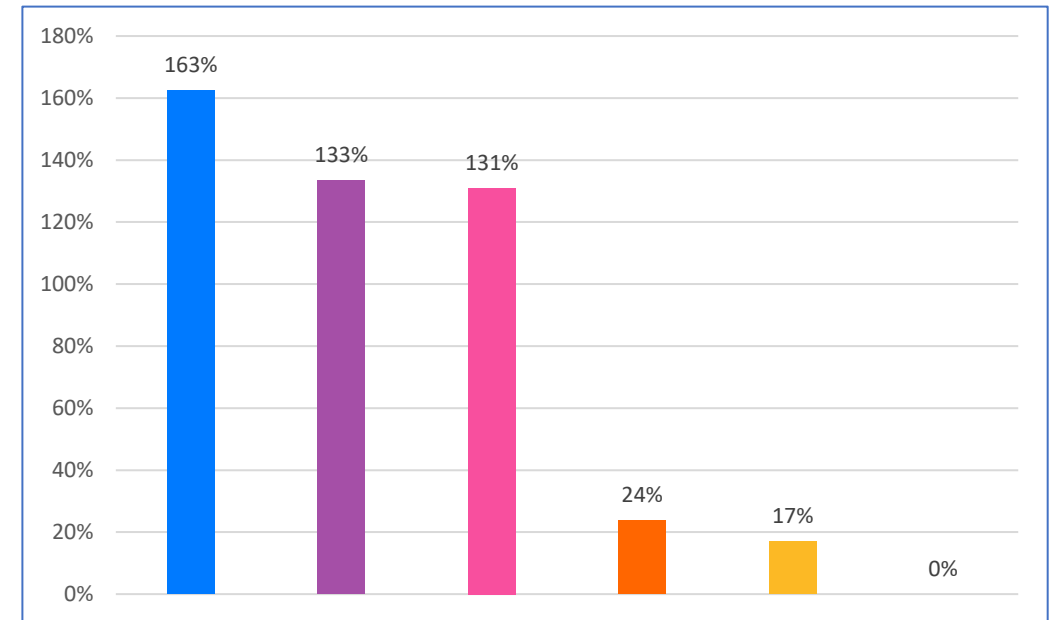
	Jun-20	Jul-20	Aug-20	Sep-20	Oct-20	Nov-20	Dec-20	Jan-21	Feb-21	Mar-21	Apr-21	May-21	Jun-21
Index	41	43	45	48	45	43	44	47	49	62	61	64	59
YoY	-27%	-30%	-22%	-14%	-18%	-28%	-25%	-11%	-18%	-2%	49%	60%	44%

Index YoY

# Hiring Trends – Industry\*

All 9 industries monitored by the Index recorded huge incline in June'21 on annual basis

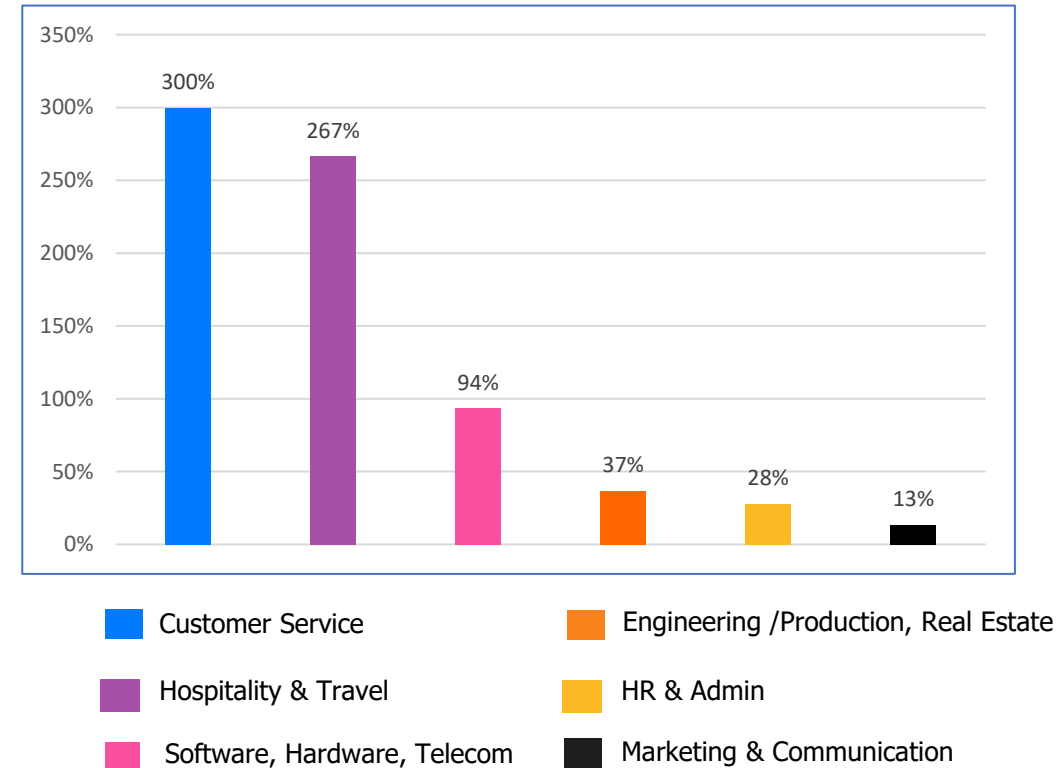
- ✓ **Logistic, Courier/ Freight/ Transportation, Shipping/ Marine** (+163%), **IT, Telecom/ISP, BPO/ITES** (+131%) and **Retail** (+133%) industries saw the sharpest growth in online recruitment activity in June'21 from the year-ago level.
- ✓ Some of the major industries like **BFSI** (+55%), **Oil and Gas** (+42%), **Production/Manufacturing, Automotive and Ancillary** (+26%), **Advertising, Market Research, Public Relations, Media and Entertainment** (+24%), **Engineering, Construction and Real Estate** (+17%) and **Hospitality** (0%) also grew sequentially in June'21 Vs June'20



# Hiring Trends - Functional Area\*

All 9 functional areas monitored by the Index registered growth in annual demand in June'21

- ✓ Annual online demand for all professionals witnessed upswing in June'21. **Customer Service** (+300%), **Purchase/ Logistics/ Supply chain** (+88%) and **Sales & Business Development** (+65%) noticed the steepest incline in recruitment activity from the year ago level.
- ✓ Some of the other areas like **Marketing & Communications** (+13%), **HR & Admin** (+28%), **Finance & Accounts** (+51%), **Engineering/ Production, Real Estate** (+37%), **Software, Hardware, Telecom** (+94%) and **Hospitality & Travel** (+267%) saw positive sequential growth on YoY basis.



# Data & Methodology

The Monster Employment Index is a broad and comprehensive monthly analysis of online job posting activity conducted by Monster India. Based on a real-time review of millions of employer job opportunities culled from a large, representative selection of online career outlets, the Monster Employment Index presents a snapshot of employer online recruitment activity nationwide.

In order to avoid excessive monthly fluctuations, the index is calculated using a volatility-adjusting formula. We publish the data in a volume index format with the base value of 100. The index describes changes in the level of online job demand against the baseline. An increase in the index indicates growth in online job availability and suggests an increase in the demand for employees by employers.

Monster Employment Index was first launched in India in June 2010 with data collected since October 2009 followed by Gulf in June 2011 with data collected since October 2010; Singapore in June 2014 with data collected since January 2011; Philippines and Malaysia in June 2015 with data collected since February 2014.

Monster has taken due care in compiling and processing the data available from various sources for Monster Employment Index, but does not guarantee the accuracy, adequacy or completeness of any information and is not responsible for any errors or omissions or action / decision taken or for the result obtained from the use of such information.



# About Monster APAC & Gulf

Monster is a leading online career and recruitment resource, and with its cutting-edge technology, it provides relevant profiles to employers and relevant jobs to jobseekers across industry verticals, experience levels and geographies. Monster started its operations with India in 2001 and today has operations across India, Singapore, Malaysia, Philippines, Hong Kong, Vietnam, Thailand, Indonesia, UAE and Kingdom of Saudi Arabia

In India, it is headquartered in Hyderabad, and has presence in more than 10 other cities of India, including Mumbai, Delhi, Bangalore, Chennai, Pune, Kolkata, Ahmedabad, Baroda, Chandigarh, and Cochin. In India, the Monster Mobile App was voted Product of the Year 2016, under the 'Mobile App Job' category in a survey of over 18,000 people by Nielsen. Monster continues its pioneering work of transforming the recruiting industry with advanced technology using intelligent digital, social and mobile solutions, and a vast array of products and services.

**To learn more about Monster in APAC & Gulf, visit:**

[www.monsterindia.com](http://www.monsterindia.com)

[www.monster.com.my](http://www.monster.com.my)

[www.monstergulf.com](http://www.monstergulf.com)

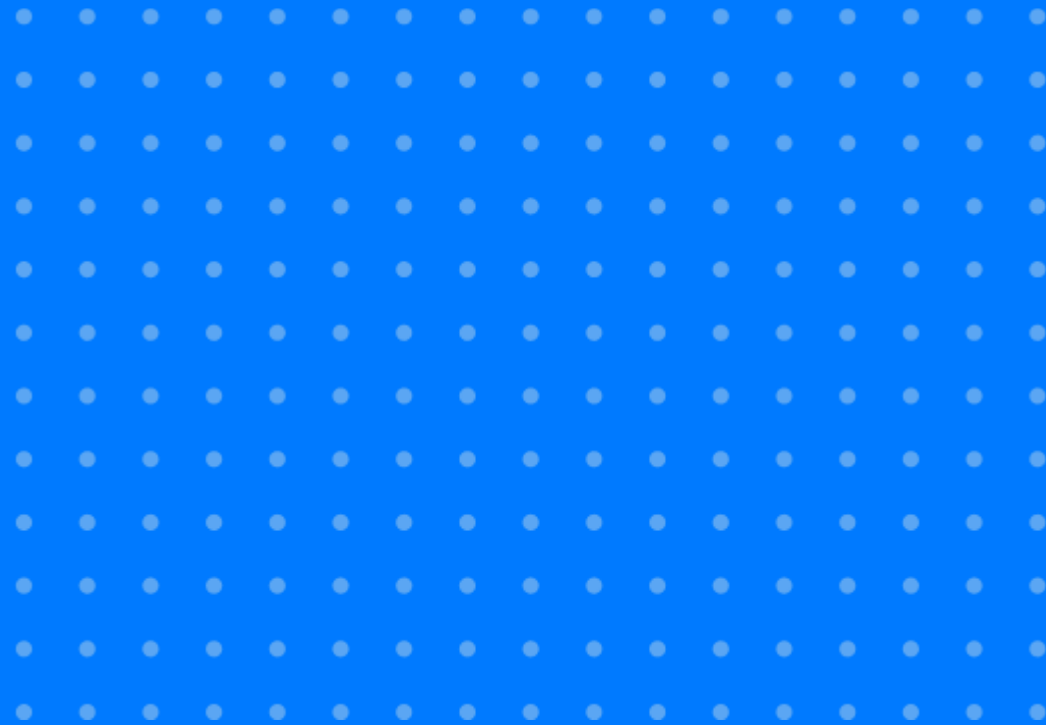
[www.monster.com.ph](http://www.monster.com.ph)

[www.monster.com.sg](http://www.monster.com.sg)

[www.monster.com.hk](http://www.monster.com.hk)



# Annexure





# Annexure: Industry Data\*

Industries	Jun-20	Jul-20	Aug-20	Sep-20	Oct-20	Nov-20	Dec-20	Jan-21	Feb-21	Mar-21	Apr-21	May-21	Jun-21
IT, Telecom/ISP and BPO/ITES	84	87	90	99	118	116	130	137	163	184	165	187	
Engineering, Construction and Real Estate	41	44	44	45	47	48	50	51	56	63	51	50	48
BFSI	42	41	43	46	49	48	49	52	59	71	65	64	65
Production/Manufacturing, Automotive and Ancillary	80	80	82	84	89	89	91	94	100	108	105	106	101
Oil and Gas	90	91	90	93	97	101	110	107	125	127	121	123	128
Hospitality	40	40	38	40	38	40	40	40	41	43	42	41	40
Retail	6	10	10	13	16	14	15	16	16	31	28	24	14
Logistic, Courier/ Freight/ Transportation, Shipping/ Marine	24	29	37	42	51	50	53	61	71	94	79	74	63
Advertising, Market Research, Public Relations, Media and Entertainment	46	48	49	52	53	52	54	56	54	64	60	60	57

# Annexure: Functional Area Data\*

Functions	Jun-20	Jul-20	Aug-20	Sep-20	Oct-20	Nov-20	Dec-20	Jan-21	Feb-21	Mar-21	Apr-21	May-21	Jun-21
Software, Hardware, Telecom	62	60	55	57	64	66	63	77	94	118	115	114	120
Finance & Accounts	48	48	49	51	52	53	52	56	58	69	68	68	67
Sales & Business Development	46	51	54	59	64	66	68	70	75	91	88	88	76
Customer Service	6	7	7	11	15	17	19	23	26	31	31	24	24
Marketing & Communications	67	69	69	71	71	72	71	74	74	80	81	80	76
HR & Admin	43	45	45	46	47	48	48	51	50	61	60	61	55
Engineering /Production, Real Estate	49	51	52	54	57	57	57	61	62	73	71	72	67
Hospitality & Travel	6	2	2	4	5	5	6	6	8	12	16	21	19
Purchase/ Logistics/ Supply Chain	43	46	50	52	57	58	59	66	68	88	87	88	81

**Thank you**

