

monster®
Find Better.™

Employment Index

May 2021

Hiring Trends in Malaysia



Contents



01 Key Highlights of the Month

Page 3

02 Hiring Trends - Industry

Page 4

03 Hiring Trends - Functional Area

Page 5

04 Data & Methodology

Page 6

05 About Monster APAC & Gulf

Page 7

06 Annexure

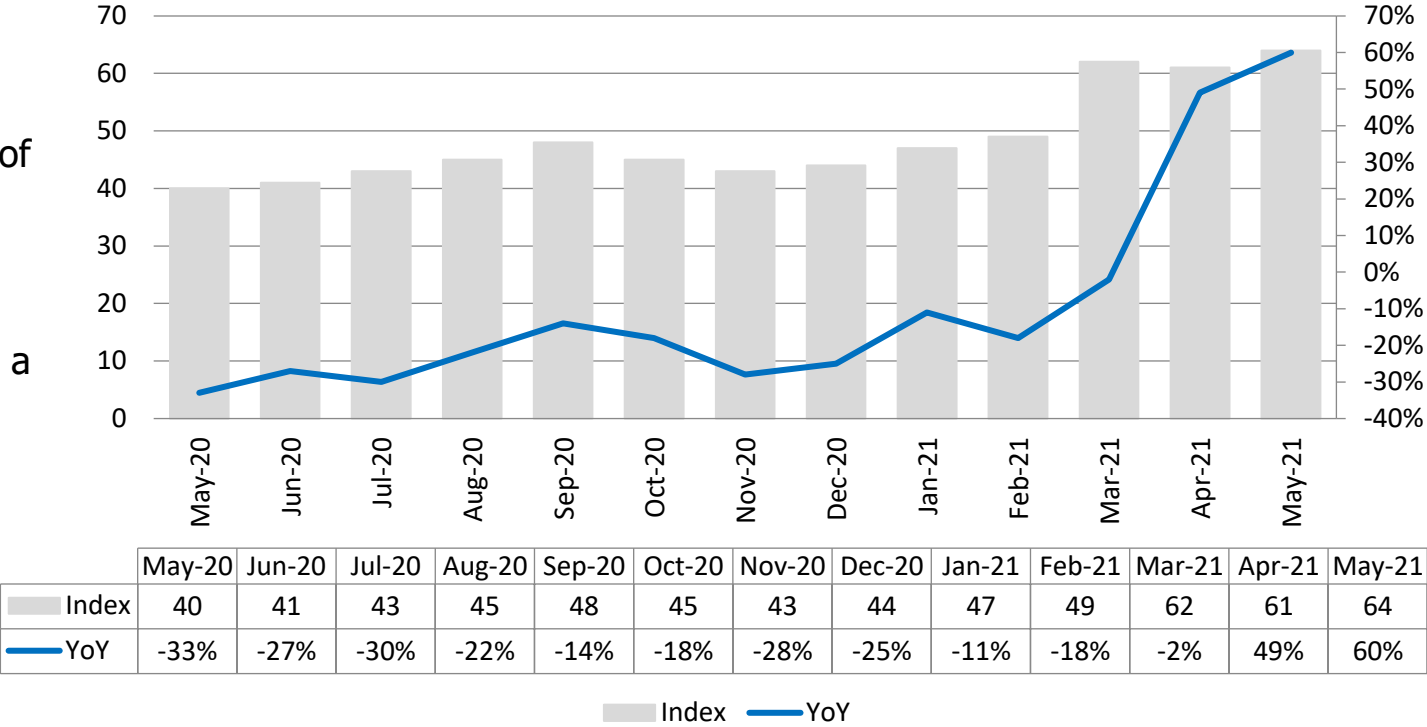
Page 9-10

Key Highlights of the Month

Monster Employment Index Malaysia increased 60% in online recruitment activity between May'20 and May'21

- ✓ The Monster Employment Index (MEI) rise to 64 in May'21 from 40 in May'20.
- ✓ MoM, monthly job demand witnessed a growth of 5%; as April'21 saw an index of 61.
- ✓ According to the MEI, the recruitment activity saw a huge jump on YoY basis.

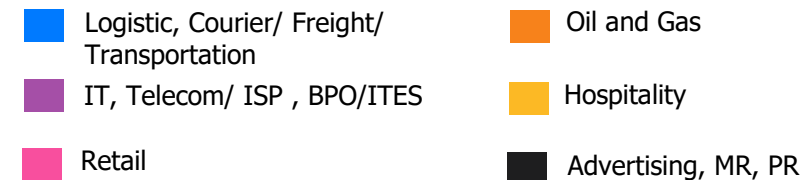
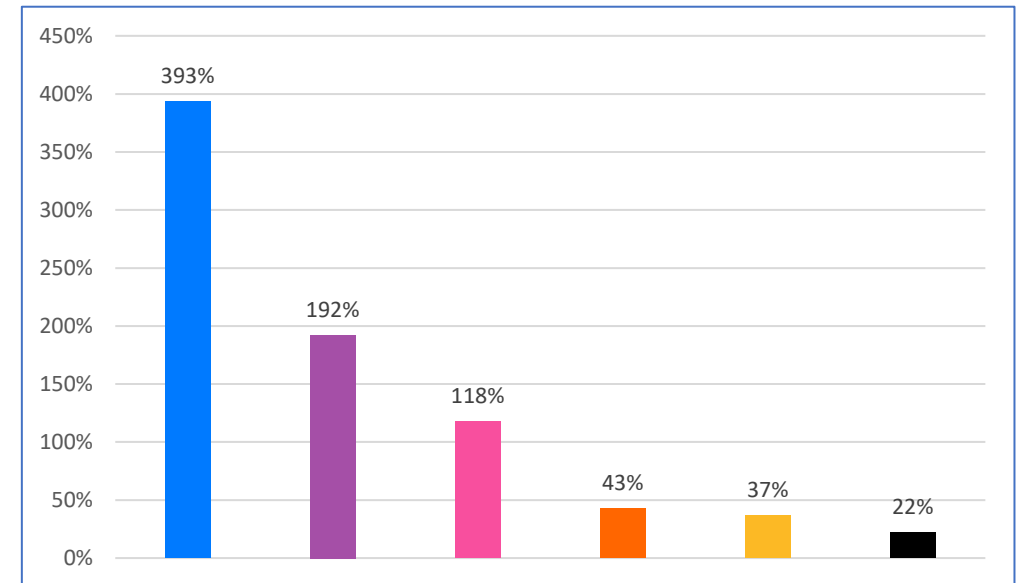
Monster Employment Index



Hiring Trends – Industry*

All 9 industries monitored by the Index recorded huge incline in May'21 on annual basis

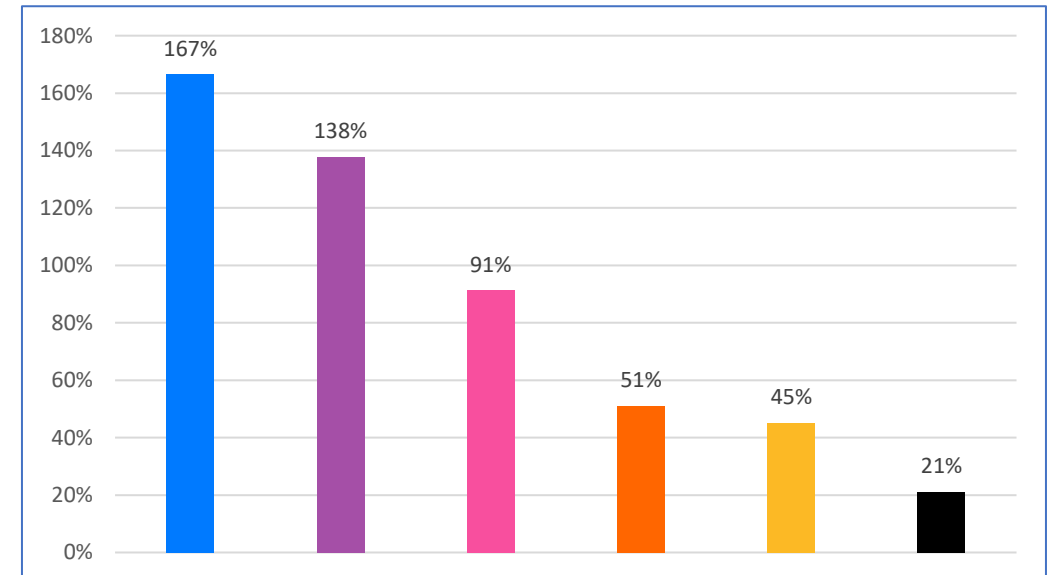
- ✓ **Logistic, Courier/ Freight/ Transportation, Shipping/ Marine** (+393%), **IT, Telecom/ISP, BPO/ITES** (+192%) and **Retail** (+118%) industries saw the steepest growth in online recruitment activity in May'21 from the year-ago level.
- ✓ Some of the major industries like **BFSI** (+68%), **Engineering, Construction and Real Estate** (+47%), **Production/Manufacturing, Automotive and Ancillary** (+45%), **Oil and Gas** (+43%), **Hospitality** (+37%) and **Advertising, Market Research, Public Relations, Media and Entertainment** (+22%) also saw year-on-year growth in May'21.



Hiring Trends - Functional Area*

All 9 functional areas monitored by the Index registered increase in annual demand in May'21

- ✓ Annual online demand for all professionals saw a huge jump in May'21. **Customer Service** (+167%), **Purchase/ Logistics/ Supply chain** (+138%) and **Sales & Business Development** (+91%) noticed the sharpest incline in recruitment activity from the year ago level.
- ✓ Some of the other areas like **Marketing & Communications** (+21%), **HR & Admin** (+45%), **Finance & Accounts** (+51%), **Engineering/ Production, Real Estate** (+57%), **Software, Hardware, Telecom** (+90%) and **Hospitality & Travel** (+75%) saw incline on YoY basis.



Data & Methodology

The Monster Employment Index is a broad and comprehensive monthly analysis of online job posting activity conducted by Monster India. Based on a real-time review of millions of employer job opportunities culled from a large, representative selection of online career outlets, the Monster Employment Index presents a snapshot of employer online recruitment activity nationwide.

In order to avoid excessive monthly fluctuations, the index is calculated using a volatility-adjusting formula. We publish the data in a volume index format with the base value of 100. The index describes changes in the level of online job demand against the baseline. An increase in the index indicates growth in online job availability and suggests an increase in the demand for employees by employers.

Monster Employment Index was first launched in India in May 2010 with data collected since October 2009 followed by Gulf in May 2011 with data collected since October 2010; Singapore in May 2014 with data collected since January 2011; Philippines and Malaysia in May 2015 with data collected since February 2014.

Monster has taken due care in compiling and processing the data available from various sources for Monster Employment Index, but does not guarantee the accuracy, adequacy or completeness of any information and is not responsible for any errors or omissions or action / decision taken or for the result obtained from the use of such information.



About Monster APAC & Gulf

Monster is a leading online career and recruitment resource, and with its cutting-edge technology, it provides relevant profiles to employers and relevant jobs to jobseekers across industry verticals, experience levels and geographies. Monster started its operations with India in 2001 and today has operations across India, Singapore, Malaysia, Philippines, Hong Kong, Vietnam, Thailand, Indonesia, UAE and Kingdom of Saudi Arabia

In India, it is headquartered in Hyderabad, and has presence in more than 10 other cities of India, including Mumbai, Delhi, Bangalore, Chennai, Pune, Kolkata, Ahmedabad, Baroda, Chandigarh, and Cochin. In India, the Monster Mobile App was voted Product of the Year 2016, under the 'Mobile App Job' category in a survey of over 18,000 people by Nielsen. Monster continues its pioneering work of transforming the recruiting industry with advanced technology using intelligent digital, social and mobile solutions, and a vast array of products and services.

To learn more about Monster in APAC & Gulf, visit:

www.monsterindia.com

www.monster.com.my

www.monstergulf.com

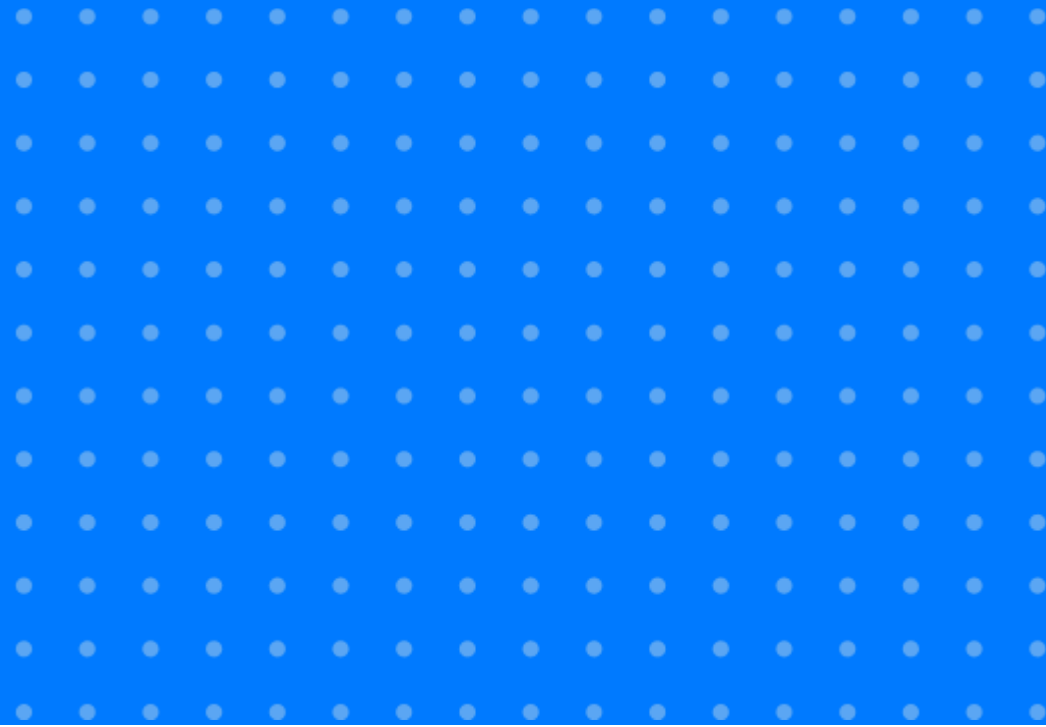
www.monster.com.ph

www.monster.com.sg

www.monster.com.hk



Annexure



Annexure: Industry Data*

Industries	May-20	Jun-20	Jul-20	Aug-20	Sep-20	Oct-20	Nov-20	Dec-20	Jan-21	Feb-21	Mar-21	Apr-21	May-21
IT, Telecom/ISP and BPO/ITES	64	84	87	90	99	118	116	130	137	163	184	165	187
Engineering, Construction and Real Estate	34	41	44	44	45	47	48	50	51	56	63	51	50
BFSI	38	42	41	43	46	49	48	49	52	59	71	65	64
Production/Manufacturing, Automotive and Ancillary	73	80	80	82	84	89	89	91	94	100	108	105	106
Oil and Gas	86	90	91	90	93	97	101	110	107	125	127	121	123
Hospitality	30	40	40	38	40	38	40	40	40	41	43	42	41
Retail	11	6	10	10	13	16	14	15	16	16	31	28	24
Logistic, Courier/ Freight/ Transportation, Shipping/ Marine	15	24	29	37	42	51	50	53	61	71	94	79	74
Advertising, Market Research, Public Relations, Media and Entertainment	49	46	48	49	52	53	52	54	56	54	64	60	60

Annexure: Functional Area Data*

Functions	May-20	Jun-20	Jul-20	Aug-20	Sep-20	Oct-20	Nov-20	Dec-20	Jan-21	Feb-21	Mar-21	Apr-21	May-21
Software, Hardware, Telecom	60	62	60	55	57	64	66	63	77	94	118	115	114
Finance & Accounts	45	48	48	49	51	52	53	52	56	58	69	68	68
Sales & Business Development	46	46	51	54	59	64	66	68	70	75	91	88	88
Customer Service	9	6	7	7	11	15	17	19	23	26	31	31	24
Marketing & Communications	66	67	69	69	71	71	72	71	74	74	80	81	80
HR & Admin	42	43	45	45	46	47	48	48	51	50	61	60	61
Engineering /Production, Real Estate	46	49	51	52	54	57	57	57	61	62	73	71	72
Hospitality & Travel	12	6	2	2	4	5	5	6	6	8	12	16	21
Purchase/ Logistics/ Supply Chain	37	43	46	50	52	57	58	59	66	68	88	87	88

Thank you

