

monster®  
Find Better.™

# Employment Index

Oct 2021

## Hiring Trends in Malaysia



# Contents



01 Key Highlights of the Month

Page 3

02 Hiring Trends - Industry

Page 4

03 Hiring Trends - Functional Area

Page 5

04 Data & Methodology

Page 6

05 About Monster APAC & Gulf

Page 7

06 Annexure

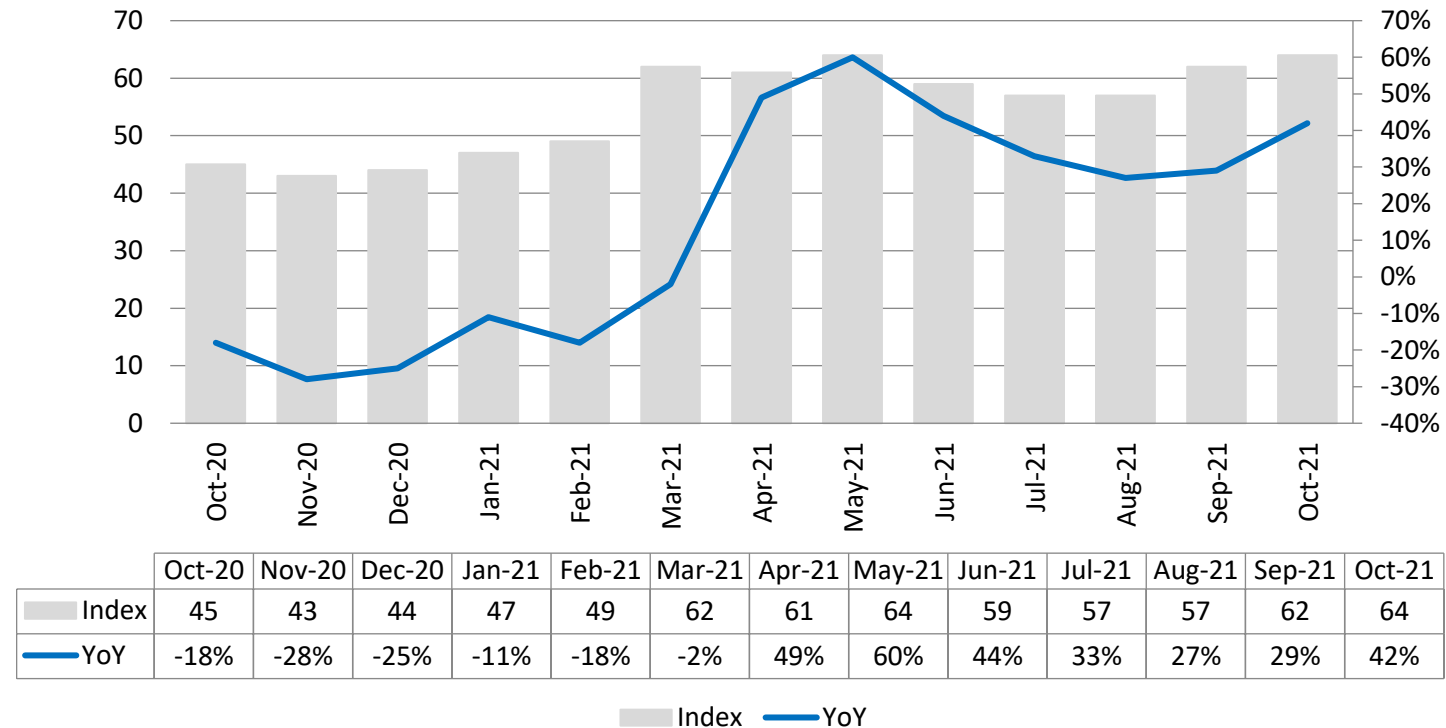
Page 9-10

# Key Highlights of the Month

**Monster Employment Index Malaysia rise 42% in online recruitment activity between October'20 and October'21**

- ✓ The Monster Employment Index (MEI) moved to 64 in October'21 from 45 in October'20.
- ✓ MoM, there's incline as monthly job demand witnessed a growth of 3%; as September'21 saw an index of 62.
- ✓ According to the MEI, e-recruitment activity marked growth of 12% in the last three month.

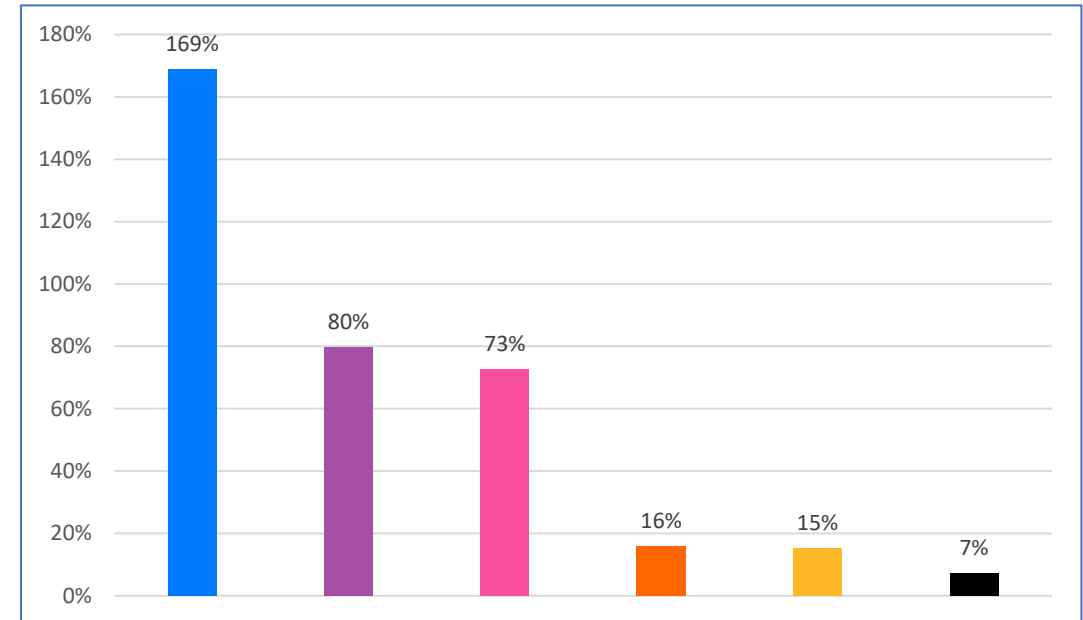
**Monster Employment Index**



# Hiring Trends – Industry\*

All the 9 industries monitored by the Index recorded incline in October'21 on annual basis

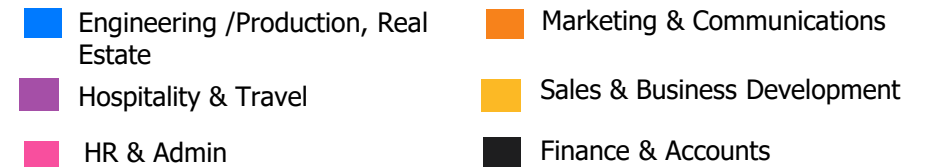
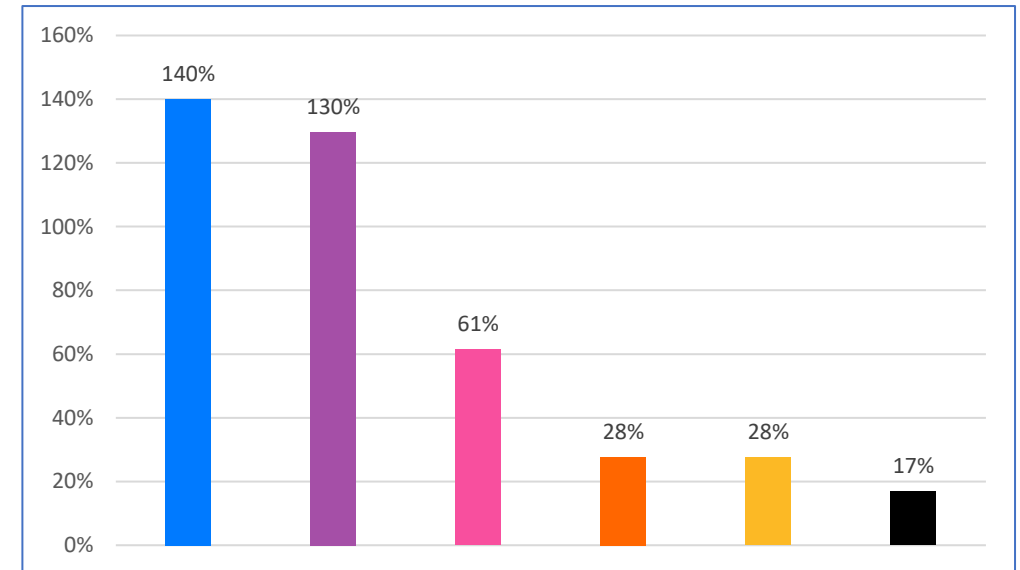
- ✓ **Production/Manufacturing, Automotive and Ancillary (+169%), IT, Telecom/ISP, BPO/ITES (+80%) and Advertising, Market Research, Public Relations, Media and Entertainment (+73%)** industries saw the sharpest incline in demand for jobs in October'21 from the year-ago level.
- ✓ **BFSI (+7%), Engineering, Construction and Real Estate (+15%) and Oil and Gas (16%)** noticing the lowest growth among others annually in October'21.
- ✓ Some of the major industries like **Logistic, Courier/ Freight/ Transportation, Shipping/ Marine (+17%), Retail (+20%), Hospitality (+40%)** also saw consecutive growth in October'21 Vs October'20



# Hiring Trends - Functional Area\*

All the 9 functional areas monitored by the Index registered increased annual demand in October'21

- ✓ The demand for all professionals witnessed monthly as well as annual upsurge in hiring demand in October'21. **Engineering/ Production, Real Estate** (+140%) and **Hospitality & Travel** (+130%) noticed a huge jump in recruitment activity from the year ago level.
- ✓ Some of the other areas like **Finance & Accounts** (+17%) and **Sales & Business Development** (+28%) **Marketing & Communications** (+28%), **Customer Service** (+48%), **Software, Hardware, Telecom** (+41%) and **Purchase/ Logistics/ Supply chain** (+47%) **HR & Admin** (+61%), also grew sequentially on YoY basis.



# Data & Methodology

The Monster Employment Index is a broad and comprehensive monthly analysis of online job posting activity conducted by Monster India. Based on a real-time review of millions of employer job opportunities culled from a large, representative selection of online career outlets, the Monster Employment Index presents a snapshot of employer online recruitment activity nationwide.

In order to avoid excessive monthly fluctuations, the index is calculated using a volatility-adjusting formula. We publish the data in a volume index format with the base value of 100. The index describes changes in the level of online job demand against the baseline. An increase in the index indicates growth in online job availability and suggests an increase in the demand for employees by employers.

Monster Employment Index was first launched in India in October 2010 with data collected since October 2009 followed by Gulf in October 2011 with data collected since October 2010; Singapore in October 2014 with data collected since January 2011; Philippines and Malaysia in October 2015 with data collected since February 2014.

Monster has taken due care in compiling and processing the data available from various sources for Monster Employment Index, but does not guarantee the accuracy, adequacy or completeness of any information and is not responsible for any errors or omissions or action / decision taken or for the result obtained from the use of such information.



# About Monster APAC & Gulf

Monster is a leading online career and recruitment resource, and with its cutting-edge technology, it provides relevant profiles to employers and relevant jobs to jobseekers across industry verticals, experience levels and geographies. Monster started its operations with India in 2001 and today has operations across India, Singapore, Malaysia, Philippines, Hong Kong, Vietnam, Thailand, Indonesia, UAE and Kingdom of Saudi Arabia

In India, it is headquartered in Hyderabad, and has presence in more than 10 other cities of India, including Mumbai, Delhi, Bangalore, Chennai, Pune, Kolkata, Ahmedabad, Baroda, Chandigarh, and Cochin. In India, the Monster Mobile App was voted Product of the Year 2016, under the 'Mobile App Job' category in a survey of over 18,000 people by Nielsen. Monster continues its pioneering work of transforming the recruiting industry with advanced technology using intelligent digital, social and mobile solutions, and a vast array of products and services.

**To learn more about Monster in APAC & Gulf, visit:**

[www.monsterindia.com](http://www.monsterindia.com)

[www.monster.com.my](http://www.monster.com.my)

[www.monstergulf.com](http://www.monstergulf.com)

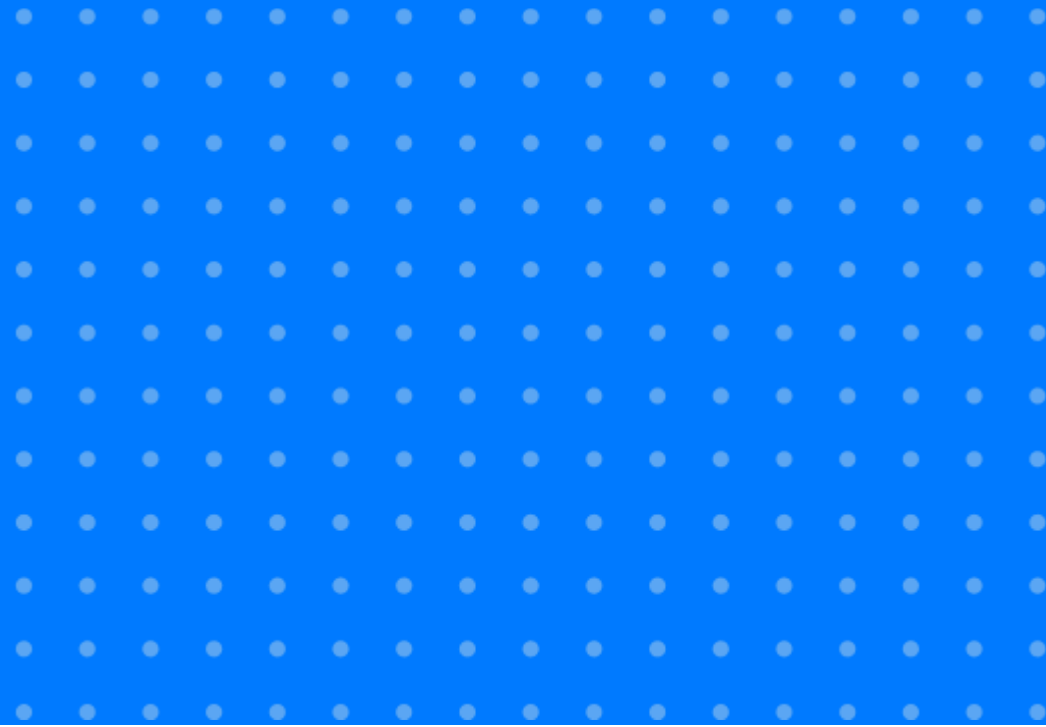
[www.monster.com.ph](http://www.monster.com.ph)

[www.monster.com.sg](http://www.monster.com.sg)

[www.monster.com.hk](http://www.monster.com.hk)



# Annexure





# Annexure: Industry Data\*

Industries	Oct-20	Nov-20	Dec-20	Jan-21	Feb-21	Mar-21	Apr-21	May-21	Jun-21	Jul-21	Aug-21	Sep-21	Oct-21
IT, Telecom/ISP and BPO/ITES	118	116	130	137	163	184	165	187	194	194	202	207	212
Engineering, Construction and Real Estate	47	48	50	51	56	63	51	50	48	48	48	50	55
BFSI	49	48	49	52	59	71	65	64	65	62	63	68	75
Production/Manufacturing, Automotive and Ancillary	89	89	91	94	100	108	105	106	101	97	98	100	107
Oil and Gas	97	101	110	107	125	127	121	123	128	133	115	113	104
Hospitality	38	40	40	40	41	43	42	41	40	39	40	40	44
Retail	16	14	15	16	16	31	28	24	14	15	15	30	43
Logistic, Courier/ Freight/ Transportation, Shipping/ Marine	51	50	53	61	71	94	79	74	63	55	64	68	88
Advertising, Market Research, Public Relations, Media and Entertainment	53	52	54	56	54	64	60	60	57	57	54	57	61

# Annexure: Functional Area Data\*

Functions	Oct-20	Nov-20	Dec-20	Jan-21	Feb-21	Mar-21	Apr-21	May-21	Jun-21	Jul-21	Aug-21	Sep-21	Oct-21
Software, Hardware, Telecom	64	66	63	77	94	118	115	114	120	119	124	139	147
Finance & Accounts	52	53	52	56	58	69	68	68	67	68	69	73	77
Sales & Business Development	64	66	68	70	75	91	88	88	76	80	76	87	90
Customer Service	15	17	19	23	26	31	31	24	24	26	17	17	22
Marketing & Communications	71	72	71	74	74	80	81	80	76	75	75	78	83
HR & Admin	47	48	48	51	50	61	60	61	55	54	53	56	60
Engineering /Production, Real Estate	57	57	57	61	62	73	71	72	67	65	67	71	76
Hospitality & Travel	5	5	6	6	8	12	16	16	13	11	8	12	12
Purchase/ Logistics/ Supply Chain	57	58	59	66	68	88	87	88	81	75	82	85	92

**Thank you**

