

monster®  
Find Better.™

# Employment Index

August 2020

## Hiring Trends in Malaysia



# Contents

01 Key Highlights of the Month

Page 3

02 Hiring Trends - Industry

Page 4

03 Hiring Trends - Functional Area

Page 5

04 Data & Methodology

Page 6

05 About Monster APAC & Gulf

Page 7

06 Annexure

Page 9-10

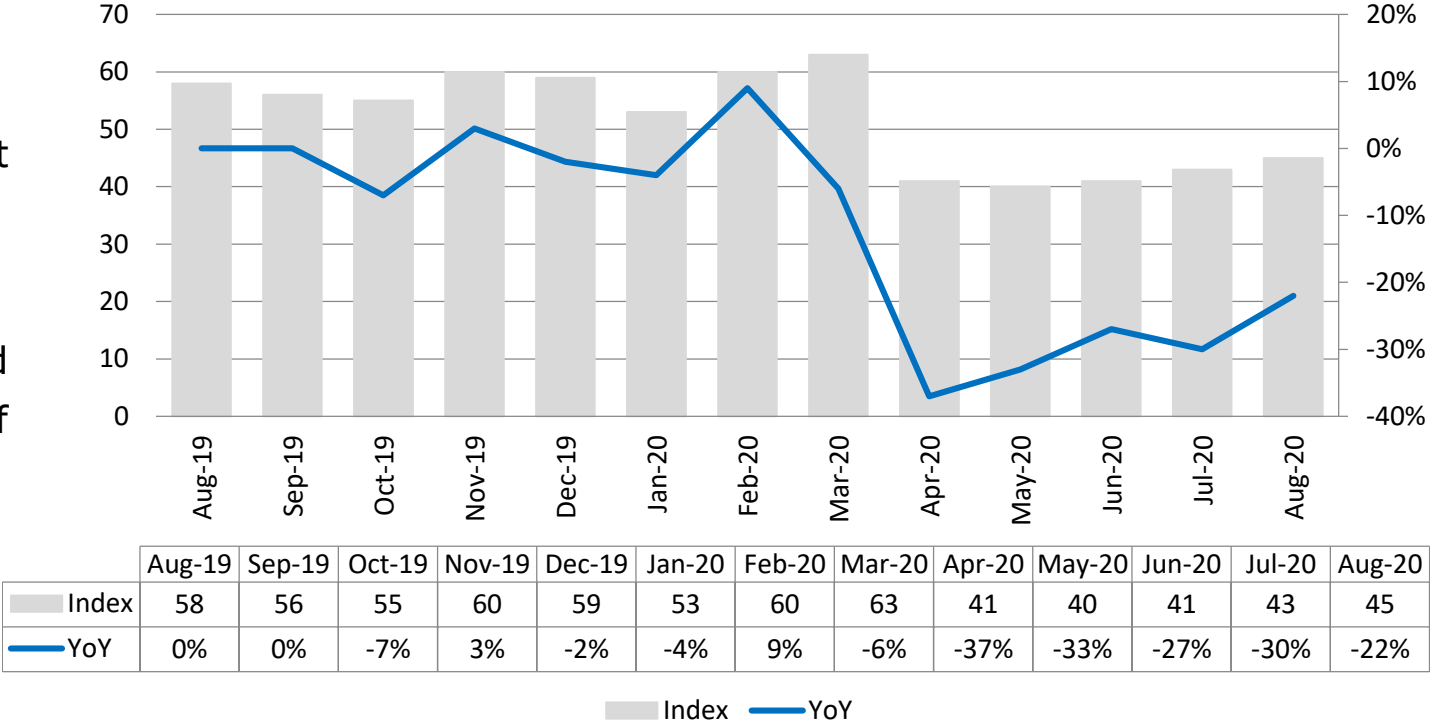


# Key Highlights of the Month

## Monster Employment Index Malaysia falls 22% in online recruitment activity between August'19 and August'20

- ✓ The Monster Employment Index (MEI) decreased to 45 in August'20 from 58 in August'19.
- ✓ Online hiring activity showing signs of improvement but the pace is painfully slow.
- ✓ There's improvement MoM as monthly demand witnessed a growth of 5%; July'20 saw an index of 43.

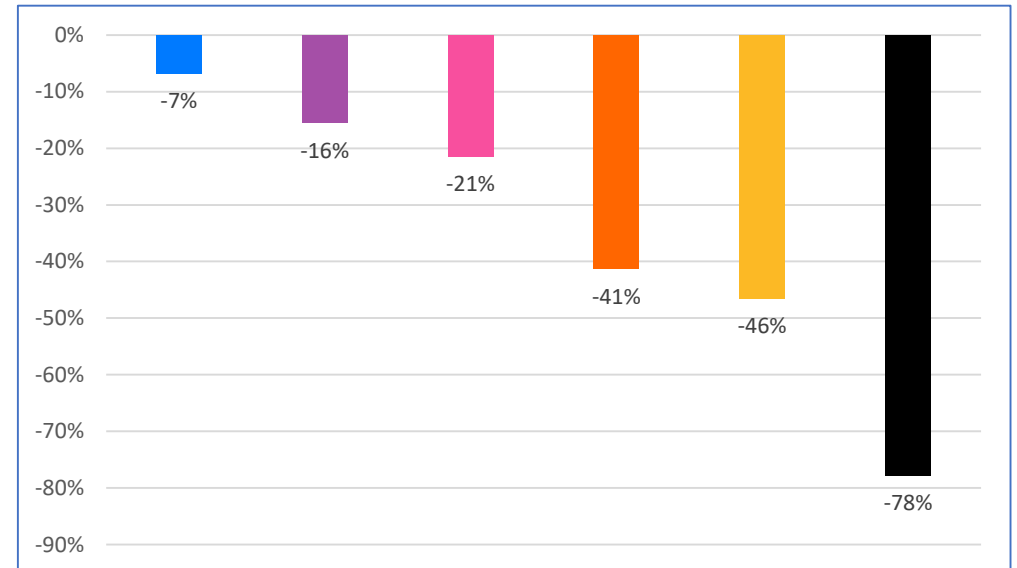
Monster Employment Index



# Hiring Trends – Industry\*

All the 9 industries monitored by the Index recorded decline in August'20 on annual basis

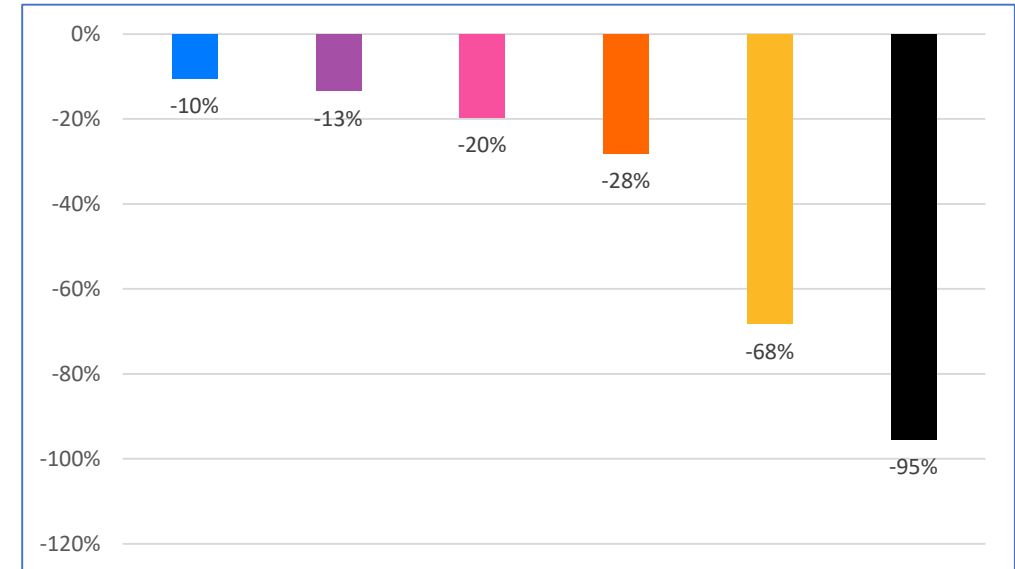
- ✓ All monitored industries saw de-growth in online recruitment activity in August'20 from the year-ago level. Of which, **Production/Manufacturing, Automotive and Ancillary (-7%), Advertising, Market Research, Public Relations, Media and Entertainment (-16%)** and **Engineering, Construction and Real Estate (-21%)** saw least decline.
- ✓ Some of the hardest-hit industries were- **Retail (-78%), Hospitality (-46%)** and **Logistic, Courier/ Freight/ Transportation, Shipping/ Marine (-41%)**.



# Hiring Trends - Functional Area\*

All the 9 functional areas monitored by the Index registered decreased annual demand in August'20

- ✓ Annual online demand for all professionals too declined in August'20. **Marketing & Communication**(-10%), **Engineering /Production, Real Estate** (-13%) and **HR & Admin** (-20%), saw the least decline.
- ✓ Whereas, **Hospitality & Travel** (-95%), **Customer Service** (-68%) and **Sales & Business Development** (-28%), recorded the steepest year-on-year decline.
- ✓ Some of the other hit areas were **Software, Hardware, Telecom** (-26%), **Finance & Accounts** (-20%).



# Data & Methodology

The Monster Employment Index is a broad and comprehensive monthly analysis of online job posting activity conducted by Monster India. Based on a real-time review of millions of employer job opportunities culled from a large, representative selection of online career outlets, the Monster Employment Index presents a snapshot of employer online recruitment activity nationwide.

In order to avoid excessive monthly fluctuations, the index is calculated using a volatility-adjusting formula. We publish the data in a volume index format with the base value of 100. The index describes changes in the level of online job demand against the baseline. An increase in the index indicates growth in online job availability and suggests an increase in the demand for employees by employers.

Monster Employment Index was first launched in India in May 2010 with data collected since October 2009 followed by Gulf in April 2011 with data collected since October 2010; Singapore in May 2014 with data collected since January 2011; Philippines and Malaysia in May 2015 with data collected since February 2014.

Monster has taken due care in compiling and processing the data available from various sources for Monster Employment Index, but does not guarantee the accuracy, adequacy or completeness of any information and is not responsible for any errors or omissions or action / decision taken or for the result obtained from the use of such information.



# About Monster APAC & Gulf

Monster is a leading online career and recruitment resource, and with its cutting-edge technology, it provides relevant profiles to employers and relevant jobs to jobseekers across industry verticals, experience levels and geographies. Monster started its operations with India in 2001 and today has operations across India, Singapore, Malaysia, Philippines, Hong Kong, Vietnam, Thailand, Indonesia, UAE and Kingdom of Saudi Arabia

In India, it is headquartered in Hyderabad, and has presence in more than 10 other cities of India, including Mumbai, Delhi, Bangalore, Chennai, Pune, Kolkata, Ahmedabad, Baroda, Chandigarh, and Cochin. In India, the Monster Mobile App was voted Product of the Year 2016, under the 'Mobile App Job' category in a survey of over 18,000 people by Nielsen. Monster continues its pioneering work of transforming the recruiting industry with advanced technology using intelligent digital, social and mobile solutions, and a vast array of products and services.

**To learn more about Monster in APAC & Gulf, visit:**

[www.monsterindia.com](http://www.monsterindia.com)

[www.monster.com.my](http://www.monster.com.my)

[www.monstergulf.com](http://www.monstergulf.com)

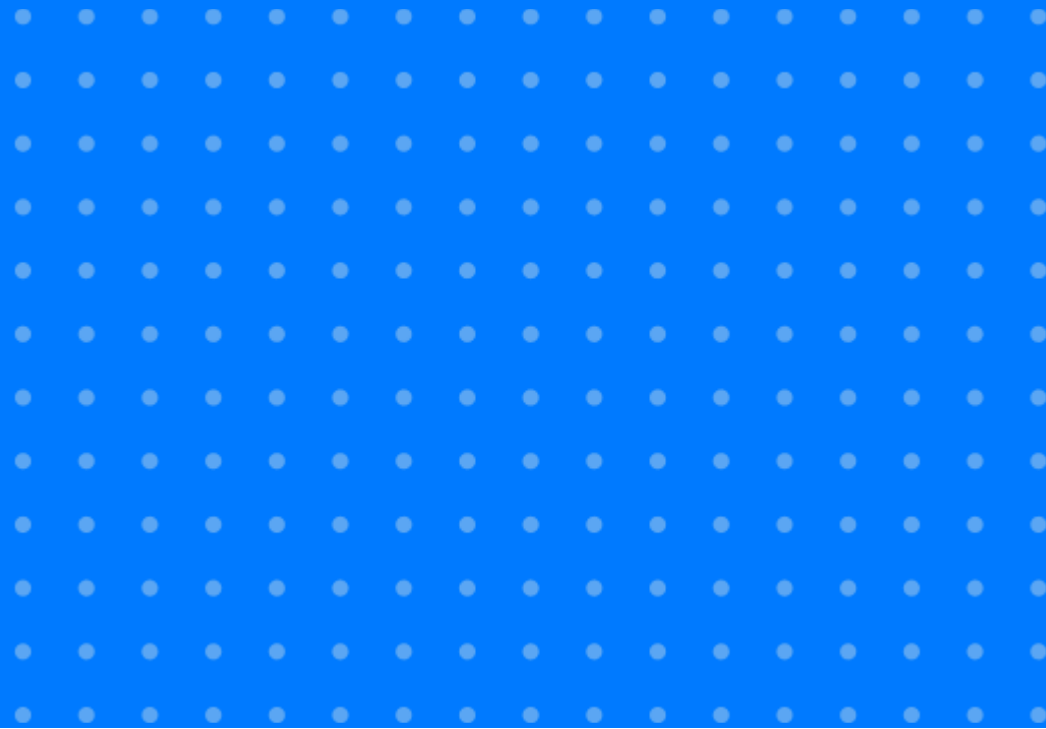
[www.monster.com.ph](http://www.monster.com.ph)

[www.monster.com.sg](http://www.monster.com.sg)

[www.monster.com.hk](http://www.monster.com.hk)



# Annexure





# Annexure: Industry Data\*

Industries	Aug-19	Sep-19	Oct-19	Nov-19	Dec-19	Jan-20	Feb-20	Mar-20	Apr-20	May-20	Jun-20	Jul-20	Aug-20
IT, Telecom/ISP and BPO/ITES	141	139	138	149	146	123	138	138	95	64	84	87	90
Engineering, Construction and Real Estate	56	56	56	58	57	51	56	60	41	34	41	44	44
BFSI	64	62	57	63	63	55	67	68	40	38	42	41	43
Production/Manufacturing, Automotive and Ancillary	88	88	87	89	89	86	91	93	78	73	80	80	82
Oil and Gas	116	102	98	99	101	96	100	105	95	86	90	91	90
Hospitality	71	61	58	66	68	68	64	59	46	30	40	40	38
Retail	45	45	40	45	40	30	43	46	13	11	6	10	10
Logistic, Courier/ Freight/ Transportation, Shipping/ Marine	63	59	59	58	58	45	55	66	16	15	24	29	37
Advertising, Market Research, Public Relations, Media and Entertainment	58	56	57	61	60	54	62	63	44	49	46	48	49

# Annexure: Functional Area Data\*

Functions	Aug-19	Sep-19	Oct-19	Nov-19	Dec-19	Jan-20	Feb-20	Mar-20	Apr-20	May-20	Jun-20	Jul-20	Aug-20
Software, Hardware, Telecom	74	75	77	78	72	58	83	93	63	60	62	60	55
Finance & Accounts	61	60	56	60	60	55	63	64	46	45	48	48	49
Sales & Business Development	75	75	71	75	71	64	74	78	53	46	46	51	54
Customer Service	22	23	24	30	27	17	19	16	12	9	6	7	7
Marketing & Communications	77	76	76	79	77	74	79	80	66	66	67	69	69
HR & Admin	56	56	55	57	55	52	56	57	42	42	43	45	45
Engineering /Production, Real Estate	60	60	60	61	61	56	62	65	48	46	49	51	52
Hospitality & Travel	44	39	40	53	55	34	35	24	19	12	6	2	2
Purchase/ Logistics/ Supply Chain	69	67	66	65	65	57	64	72	38	37	43	46	50

**Thank you**

