

monster®  
Find Better.™

# Employment Index

June 2020

## Hiring Trends in Malaysia



# Contents

01 Key Highlights of the Month

Page 3

02 Hiring Trends - Industry

Page 4

03 Hiring Trends - Functional Area

Page 5

04 Data & Methodology

Page 6

05 About Monster APAC & Gulf

Page 7

06 Annexure

Page 9-10

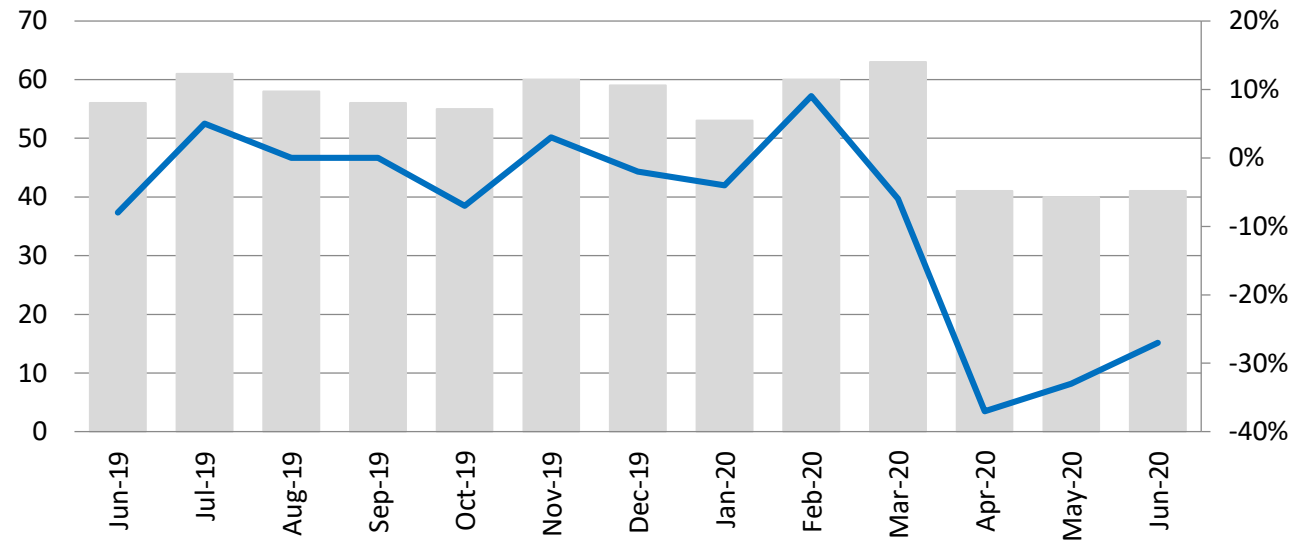


# Key Highlights of the Month

## Monster Employment Index Malaysia falls 27% in online recruitment activity between June'19 and June'20

- ✓ The Monster Employment Index (MEI) decreased to 41 in June'20 from 56 in June'19.
- ✓ Philippines is one of the worst hit nations in Southeast Asia by COVID-19 pandemic. As the region balances itself between lockdowns and deterring economic downturn, hiring activity continues to be gloomy.
- ✓ Nonetheless, monthly demand witnessed a growth of 2%; May'20 saw an index of 40.

Monster Employment Index



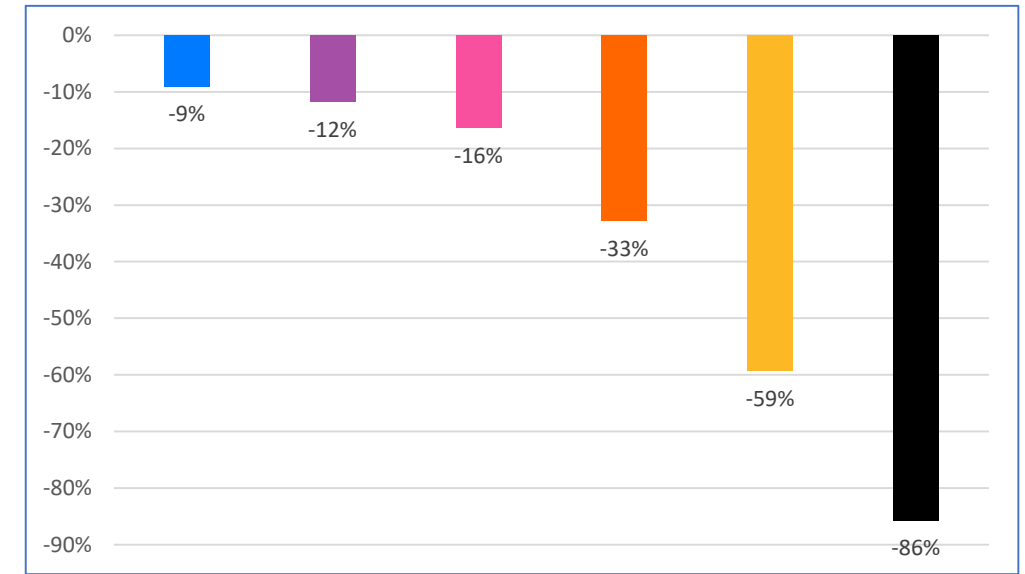
	Jun-19	Jul-19	Aug-19	Sep-19	Oct-19	Nov-19	Dec-19	Jan-20	Feb-20	Mar-20	Apr-20	May-20	Jun-20
Index	56	61	58	56	55	60	59	53	60	63	41	40	41
YoY%	-8%	5%	0%	0%	-7%	3%	-2%	-4%	9%	-6%	-37%	-33%	-27%

Index YoY%

# Hiring Trends – Industry\*

All the 9 industries monitored by the Index recorded decline in June'20 on annual basis

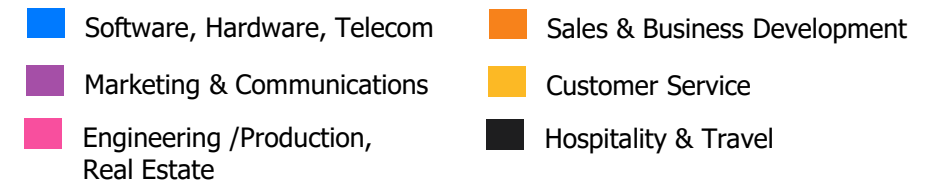
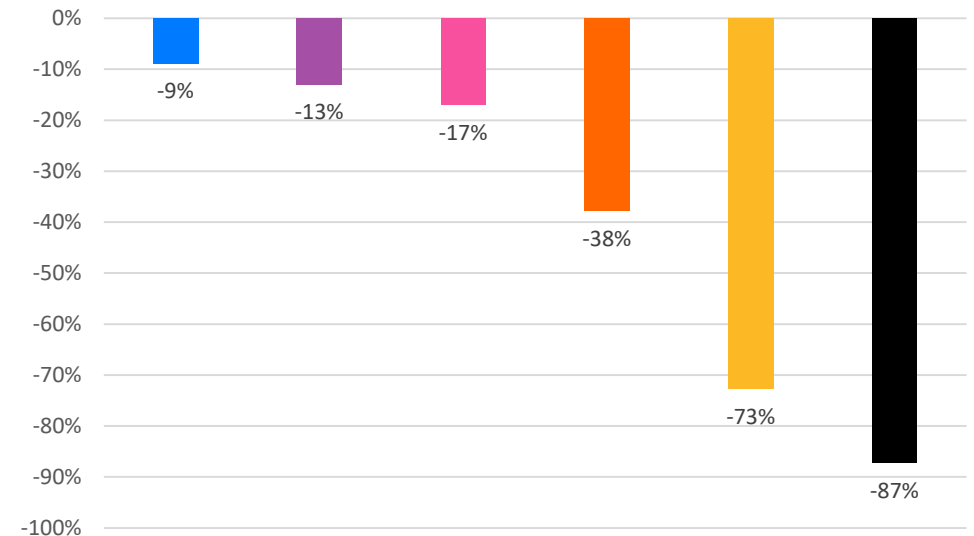
- ✓ All monitored industries saw de-growth in online recruitment activity in June'20 from the year-ago level. Of which, **Production/Manufacturing, Automotive and Ancillary (-9%), Oil and Gas (-12%)** and **Advertising, Market Research, Public Relations, Media and Entertainment (-16%)** saw least decline.
- ✓ Some of the hardest-hit industries were- **Retail (-86%), Logistic, Courier/ Freight/ Transportation, Shipping/ Marine (-59%)** and **IT, Telecom/ISP and BPO/ITES (-33%)**.



# Hiring Trends - Functional Area\*

All the 9 functional areas monitored by the Index registered decreased annual demand in June'20

- ✓ Annual online demand for all professionals also slumped in June'20. **Software, Hardware, Telecom** (-9%), **Marketing & Communications** (-13%) and **Engineering/Production, Real Estate** (-17%) saw the least decline.
- ✓ Whereas, **Hospitality & Travel** (-87%), **Customer Service** (-73%) and **Sales & Business Development** (-38%) recorded the steepest year-on-year decline.



# Data & Methodology

The Monster Employment Index is a broad and comprehensive monthly analysis of online job posting activity conducted by Monster India. Based on a real-time review of millions of employer job opportunities culled from a large, representative selection of online career outlets, the Monster Employment Index presents a snapshot of employer online recruitment activity nationwide.

In order to avoid excessive monthly fluctuations, the index is calculated using a volatility-adjusting formula. We publish the data in a volume index format with the base value of 100. The index describes changes in the level of online job demand against the baseline. An increase in the index indicates growth in online job availability and suggests an increase in the demand for employees by employers.

Monster Employment Index was first launched in India in May 2010 with data collected since October 2009 followed by Gulf in April 2011 with data collected since October 2010; Singapore in May 2014 with data collected since January 2011; Philippines and Malaysia in May 2015 with data collected since February 2014.

Monster has taken due care in compiling and processing the data available from various sources for Monster Employment Index, but does not guarantee the accuracy, adequacy or completeness of any information and is not responsible for any errors or omissions or action / decision taken or for the result obtained from the use of such information.



# About Monster APAC & Gulf

Monster is a leading online career and recruitment resource, and with its cutting-edge technology, it provides relevant profiles to employers and relevant jobs to jobseekers across industry verticals, experience levels and geographies. Monster started its operations with India in 2001 and today has operations across India, Singapore, Malaysia, Philippines, Hong Kong, Vietnam, Thailand, Indonesia, UAE and Kingdom of Saudi Arabia

In India, it is headquartered in Hyderabad, and has presence in more than 10 other cities of India, including Mumbai, Delhi, Bangalore, Chennai, Pune, Kolkata, Ahmedabad, Baroda, Chandigarh, and Cochin. In India, the Monster Mobile App was voted Product of the Year 2016, under the 'Mobile App Job' category in a survey of over 18,000 people by Nielsen. Monster continues its pioneering work of transforming the recruiting industry with advanced technology using intelligent digital, social and mobile solutions, and a vast array of products and services.

**To learn more about Monster in APAC & Gulf, visit:**

[www.monsterindia.com](http://www.monsterindia.com)

[www.monster.com.my](http://www.monster.com.my)

[www.monstergulf.com](http://www.monstergulf.com)

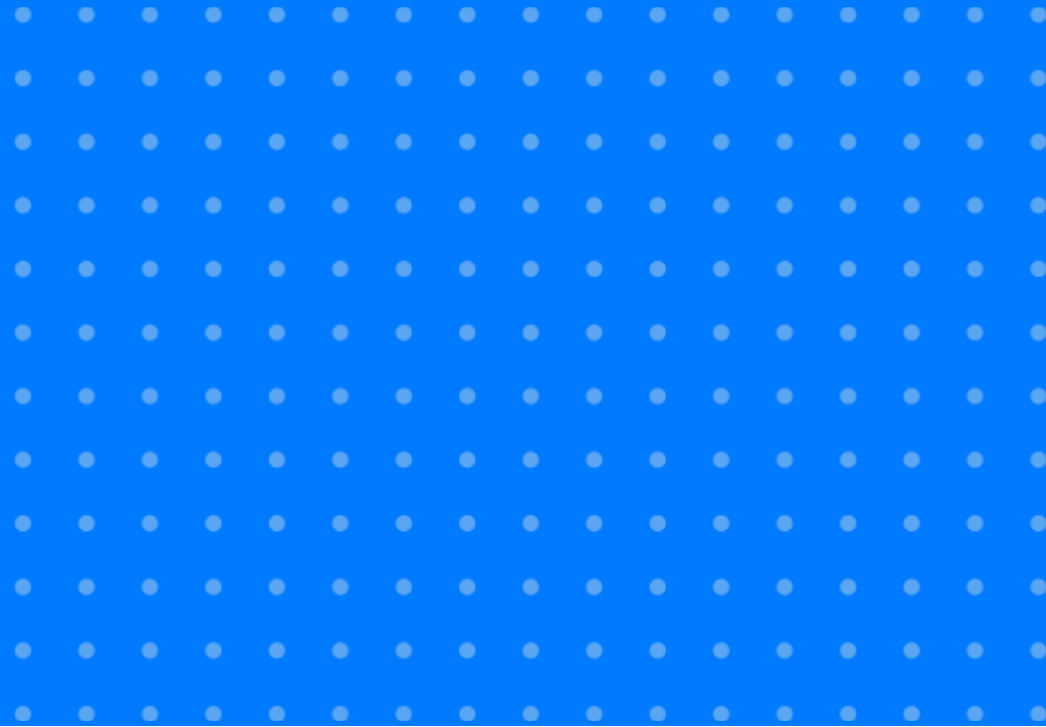
[www.monster.com.ph](http://www.monster.com.ph)

[www.monster.com.sg](http://www.monster.com.sg)

[www.monster.com.hk](http://www.monster.com.hk)



# Annexure





# Annexure: Industry Data\*

Industries	Jun-19	Jul-19	Aug-19	Sep-19	Oct-19	Nov-19	Dec-19	Jan-20	Feb-20	Mar-20	Apr-20	May-20	Jun-20
IT, Telecom/ISP and BPO/ITES	125	136	141	139	138	149	146	123	138	138	95	64	84
Engineering, Construction and Real Estate	54	59	56	56	56	58	57	51	56	60	41	34	41
BFSI	59	68	64	62	57	63	63	55	67	68	40	38	42
Production/Manufacturing, Automotive and Ancillary	88	91	88	88	87	89	89	86	91	93	78	73	80
Oil and Gas	102	110	116	102	98	99	101	96	100	105	95	86	90
Hospitality	59	66	71	61	58	66	68	68	64	59	46	30	40
Retail	42	48	45	45	40	45	40	30	43	46	13	11	6
Logistic, Courier/ Freight/ Transportation, Shipping/ Marine	59	71	63	59	59	58	58	45	55	66	16	15	24
Advertising, Market Research, Public Relations, Media and Entertainment	55	60	58	56	57	61	60	54	62	63	44	49	46

# Annexure: Functional Area Data\*

Functions	Jun-19	Jul-19	Aug-19	Sep-19	Oct-19	Nov-19	Dec-19	Jan-20	Feb-20	Mar-20	Apr-20	May-19	Jun-19
Software, Hardware, Telecom	68	78	74	75	77	78	72	58	83	93	63	60	62
Finance & Accounts	59	65	61	60	56	60	60	55	63	64	46	45	48
Sales & Business Development	74	78	75	75	71	75	71	64	74	78	53	46	46
Customer Service	22	27	22	23	24	30	27	17	19	16	12	9	6
Marketing & Communications	77	80	77	76	76	79	77	74	79	80	66	66	67
HR & Admin	56	60	56	56	55	57	55	52	56	57	42	42	43
Engineering /Production, Real Estate	59	64	60	60	60	61	61	56	62	65	48	46	49
Hospitality & Travel	47	41	44	39	40	53	55	34	35	24	19	12	6
Purchase/ Logistics/ Supply Chain	65	74	69	67	66	65	65	57	64	72	38	37	43

**Thank you**

